

For Research Use Only

# L1CAM Polyclonal antibody

Catalog Number: 20659-1-AP **5 Publications**



## Basic Information

<b>Catalog Number:</b> 20659-1-AP	<b>GenBank Accession Number:</b> NM_000425	<b>Purification Method:</b> Antigen affinity purification
<b>Size:</b> 3000 µg/ml	<b>GeneID (NCBI):</b> 3897	<b>Recommended Dilutions:</b> WB 1:500-1:2000
<b>Source:</b> Rabbit	<b>UNIPROT ID:</b> P32004	
<b>Isotype:</b> IgG	<b>Full Name:</b> L1 cell adhesion molecule	
	<b>Calculated MW:</b> 140 kDa	
	<b>Observed MW:</b> 200-220 kDa, 80 kDa	

## Applications

<b>Tested Applications:</b> WB, ELISA	<b>Positive Controls:</b> WB : mouse brain tissue, rat brain tissue
<b>Cited Applications:</b> IHC, WB	
<b>Species Specificity:</b> human, mouse, rat	
<b>Cited Species:</b> human, mouse	

## Background Information

L1CAM, also known as NCAM-L1 or CD171, is a cell adhesion molecule of the immunoglobulin superfamily. It is a 200-220 kDa transmembrane glycoprotein composed of six Ig-like domains and five fibronectin type III repeats followed by a transmembrane region and a highly conserved cytoplasmic tail (PMID: 3412448; 22796939). L1CAM is primarily expressed in the nervous system and is involved in neuron-neuron adhesion, neurite fasciculation, outgrowth of neurites, cerebellar granule cell migration, neurite outgrowth on Schwann cells and interactions among epithelial cells of intestinal crypts (PMID: 3412448; 10767310). L1CAM is overexpressed in many human cancers and is often associated with bad prognosis (PMID: 27267927; 26111503). It has been reported that L1CAM can be proteolytically cleaved into a soluble fragment of 140 kDa and an intracellular fragment of 80-85 kDa (PMID: 30842511; 34380733). This antibody raised against 1206-1221aa of human L1CAM detects 200-220 kDa full-length L1CAM and 80-kDa cleaved fragment of L1CAM.

## Notable Publications

Author	Pubmed ID	Journal	Application
Sunitha Kodidela	32481515	Diagnostics (Basel)	WB
Kuo Tong	31997427	Histopathology	IHC
Sandip Godse	37964023	Sci Rep	WB

## Storage

**Storage:**  
Store at -20°C. Stable for one year after shipment.  
**Storage Buffer:**  
PBS with 0.02% sodium azide and 50% glycerol pH 7.3.  
**Aliquoting is unnecessary for -20°C storage**

For technical support and original validation data for this product please contact:

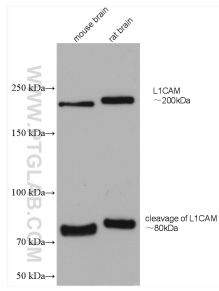
T: 4006900926

E: [Proteintech-CN@ptglab.com](mailto:Proteintech-CN@ptglab.com)

W: [ptgcn.com](http://ptgcn.com)

**This product is exclusively available under Proteintech Group brand and is not available to purchase from any other manufacturer.**

## Selected Validation Data



Various lysates were subjected to SDS PAGE followed by western blot with 20659-1-AP (L1CAM antibody) at dilution of 1:1000 incubated at room temperature for 1.5 hours.