

For Research Use Only

# GHRHR Polyclonal antibody

Catalog Number: 20715-1-AP **1 Publications**



## Basic Information

<b>Catalog Number:</b> 20715-1-AP	<b>GenBank Accession Number:</b> NM_000823	<b>Purification Method:</b> Antigen affinity purification
<b>Size:</b> 400 µg/ml	<b>GeneID (NCBI):</b> 2692	<b>Recommended Dilutions:</b> WB 1:500-1:1000 IHC 1:50-1:500
<b>Source:</b> Rabbit	<b>UNIPROT ID:</b> Q02643	
<b>Isotype:</b> IgG	<b>Full Name:</b> GHRH receptor	
	<b>Calculated MW:</b> 47 kDa	
	<b>Observed MW:</b> 48 kDa	

## Applications

<b>Tested Applications:</b> WB, IHC, ELISA	<b>Positive Controls:</b> WB : HEK-293 cells, IHC : human kidney tissue,
<b>Cited Applications:</b> IF	
<b>Species Specificity:</b> human, mouse, rat	
<b>Cited Species:</b> mouse	
<b>Note-IHC: suggested antigen retrieval with TE buffer pH 9.0; (*) Alternatively, antigen retrieval may be performed with citrate buffer pH 6.0</b>	

## Background Information

GHRHR, also named GRFR, belongs to the G-protein coupled receptor 2 family. It is a GRF receptor coupled to G proteins that activate adenylyl cyclase. GHRHR stimulates somatotroph cell growth, GH gene transcription, and GH secretion. The antibody is specific to GHRHR. The antibody is specific to GHRHR.

## Notable Publications

Author	Pubmed ID	Journal	Application
Kai Li	38488559	Neural Regen Res	IF

## Storage

**Storage:**  
Store at -20°C. Stable for one year after shipment.  
**Storage Buffer:**  
PBS with 0.02% sodium azide and 50% glycerol pH 7.3.  
Aliquoting is unnecessary for -20°C storage

For technical support and original validation data for this product please contact:

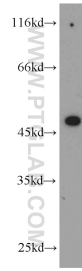
T: 4006900926

E: [Proteintech-CN@ptglab.com](mailto:Proteintech-CN@ptglab.com)

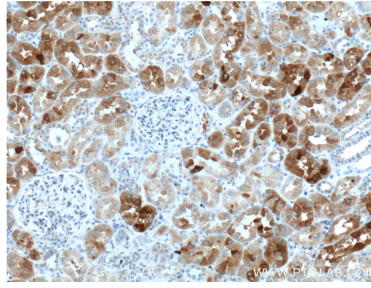
W: [ptgcn.com](http://ptgcn.com)

**This product is exclusively available under Proteintech Group brand and is not available to purchase from any other manufacturer.**

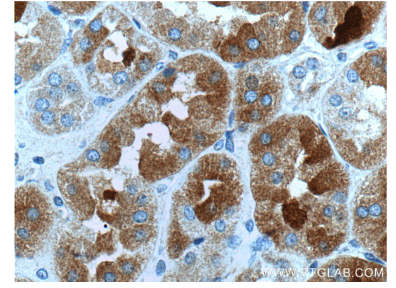
## Selected Validation Data



HEK-293 cells were subjected to SDS PAGE followed by western blot with 20715-1-AP (GHRHR antibody) at dilution of 1:500 incubated at room temperature for 1.5 hours.



Immunohistochemical analysis of paraffin-embedded human kidney tissue slide using 20715-1-AP (GHRHR Antibody) at dilution of 1:100 (under 10x lens).



Immunohistochemical analysis of paraffin-embedded human kidney tissue slide using 20715-1-AP (GHRHR Antibody) at dilution of 1:100 (under 40x lens).