

For Research Use Only

MAP7D1 Polyclonal antibody

Catalog Number: 20788-1-AP



Basic Information

Catalog Number:

20788-1-AP

Size:

600 µg/ml

Source:

Rabbit

Isotype:

IgG

Immunogen Catalog Number:

AG14385

GenBank Accession Number:

BC003083

GeneID (NCBI):

55700

UNIPROT ID:

Q3KQU3

Full Name:

MAP7 domain containing 1

Calculated MW:

841 aa, 93 kDa

Observed MW:

120-130 kDa

Purification Method:

Antigen affinity purification

Recommended Dilutions:

WB 1:5000-1:50000

IP 0.5-4.0 µg for 1.0-3.0 mg of total protein lysate

IF/ICC 1:50-1:500

Applications

Tested Applications:

WB, IP, IF/ICC, ELISA

Species Specificity:

human

Positive Controls:

WB : HEK-293 cells, MDA-MB-231 cells

IP : HEK-293 cells,

IF/ICC : U-251 cells,

Background Information

MAP7D1 also known as RPRC1, PARCC1, belongs to the MAP7 family. The MAP7 (Microtubule Associated Protein 7) protein family, consisting of four members, MAP7, MAP7D1, and MAP7D2, MAP7D3, is the microtubule-associated protein involved in various cellular processes regulating microtubule dynamics, organization, and stability (PMID: 28980356). MAP7D1 exhibits the highest conservation with MAP7 and was recently identified as a phosphorylation substrate of DCLK1 in cortical neurons. MAP7D1 is required to maintain MT acetylation, which is enriched in stable MTs (PMID: 35470240). Consistent with the literature, the apparent molecular mass of MAP7D1 detected by Western blot was 120-130 kDa (PMID: 35470240, 37550720).

Storage

Storage:

Store at -20°C. Stable for one year after shipment.

Storage Buffer:

PBS with 0.02% sodium azide and 50% glycerol pH 7.3.

Aliquoting is unnecessary for -20°C storage

For technical support and original validation data for this product please contact:

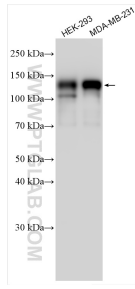
T: 4006900926

E: Proteintech-CN@ptglab.com

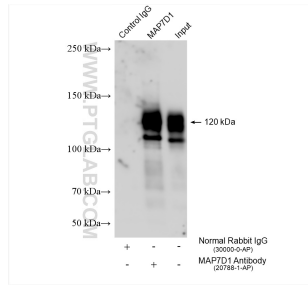
W: ptgcn.com

This product is exclusively available under Proteintech Group brand and is not available to purchase from any other manufacturer.

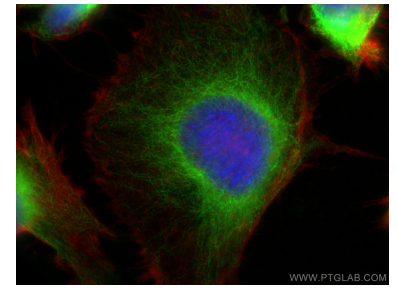
Selected Validation Data



Various lysates were subjected to SDS PAGE followed by western blot with 20788-1-AP (MAP7D1 antibody) at dilution of 1:15000 incubated at room temperature for 1.5 hours.



IP result of anti-MAP7D1 (IP:20788-1-AP, 4ug; Detection:20788-1-AP 1:30000) with HEK-293 cells lysate 1470 ug.



Immunofluorescent analysis of (-20°C Ethanol) fixed U-251 cells using MAP7D1 antibody (20788-1-AP) at dilution of 1:200 and Multi-rAb CoraLite ® Plus 488-Goat Anti-Rabbit Recombinant Secondary Antibody (H+L) (RGAR002), CL594-Phalloidin (red).