

For Research Use Only

KDM1 Polyclonal antibody

Catalog Number: 20813-1-AP

Featured Product

9 Publications



Basic Information

Catalog Number:

20813-1-AP

Size:

450 µg/ml

Source:

Rabbit

Isotype:

IgG

Immunogen Catalog Number:

AG14778

GenBank Accession Number:

BC040194

GeneID (NCBI):

23028

UNIPROT ID:

O60341

Full Name:

lysine (K)-specific demethylase 1

Calculated MW:

876 aa, 95 kDa

Observed MW:

110 kDa

Purification Method:

Antigen affinity purification

Recommended Dilutions:

WB 1:2000-1:16000

IP 0.5-4.0 µg for 1.0-3.0 mg of total protein lysate

IHC 1:50-1:500

Applications

Tested Applications:

WB, IP, IHC, ELISA

Cited Applications:

WB, IHC

Species Specificity:

human, mouse

Cited Species:

human, mouse

Note-IHC: suggested antigen retrieval with TE buffer pH 9.0; (*) Alternatively, antigen retrieval may be performed with citrate buffer pH 6.0

Positive Controls:

WB : MCF-7 cells,

IP : HeLa cells,

IHC : human lung cancer tissue,

Background Information

Lysine specific demethylase 1 (LSD1/BHC110/KIAA0601/p110b/AOF2/KDM1) is an amine oxidase that catalyzes histone demethylation via a flavin adenine dinucleotide (FAD)-dependent oxidative reaction (PMID:19703393). This protein belongs to the flavin monoamine oxidase family. Its structure and function is conserved from yeast to human and it is typically associated to CoREST, a corepressor protein, and histone deacetylases HDAC1 and HDAC2. Human LSD1 consists of 852 amino acids and comprises an N-terminal SWIRM domain, involved in protein interactions, and a C-terminal amine oxidase domain, which contains an insertion that forms the CoREST interacting site (the so-called tower domain) (PMID:20164337). It has 2 isoforms produced by alternative splicing with the calculated molecular mass of 93-95 kDa and apparent molecular mass of 110 kDa.

Notable Publications

| Author | Pubmed ID | Journal | Application |
|------------|-----------|-----------------|-------------|
| Miao Zhang | 36175800 | Int J Legal Med | WB |
| Buqing Ye | 32449550 | EMBO J | WB |
| Linyu Yan | 34180153 | Adv Sci (Weinh) | WB |

Storage

Storage:

Store at -20°C. Stable for one year after shipment.

Storage Buffer:

PBS with 0.02% sodium azide and 50% glycerol pH 7.3.

Aliquoting is unnecessary for -20°C storage

For technical support and original validation data for this product please contact:

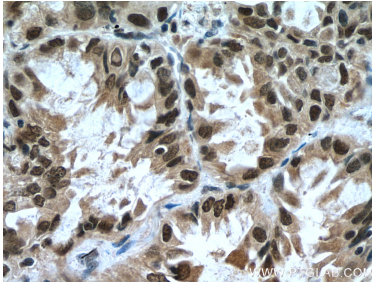
T: 4006900926

E: Proteintech-CN@ptglab.com

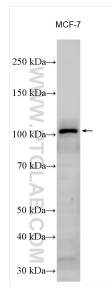
W: ptgcn.com

This product is exclusively available under Proteintech Group brand and is not available to purchase from any other manufacturer.

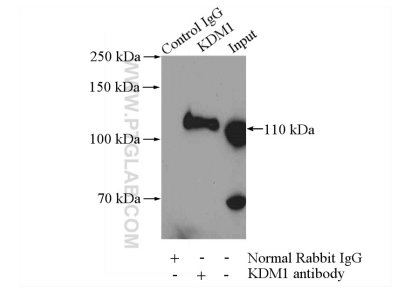
Selected Validation Data



Immunohistochemical analysis of paraffin-embedded human lung cancer tissue slide using 20813-1-AP (KDM1 antibody) at dilution of 1:200 (under 40x lens). Heat mediated antigen retrieval with Tris-EDTA buffer (pH 9.0).



MCF-7 cells were subjected to SDS PAGE followed by western blot with 20813-1-AP (KDM1 antibody) at dilution of 1:8000 incubated at room temperature for 1.5 hours.



IP result of anti-KDM1 (IP:20813-1-AP, 4ug; Detection:20813-1-AP 1:600) with HeLa cells lysate 2000ug.