

For Research Use Only

# Cyclin T1 Polyclonal antibody

Catalog Number: 20992-1-AP **3 Publications**



## Basic Information

<b>Catalog Number:</b> 20992-1-AP	<b>GenBank Accession Number:</b> NM_001240	<b>Purification Method:</b> Antigen affinity purification
<b>Size:</b> 550 µg/ml	<b>GeneID (NCBI):</b> 904	<b>Recommended Dilutions:</b> WB 1:200-1:1000 IF 1:50-1:500
<b>Source:</b> Rabbit	<b>UNIPROT ID:</b> O60563	
<b>Isotype:</b> IgG	<b>Full Name:</b> cyclin T1	
	<b>Calculated MW:</b> 81 kDa	
	<b>Observed MW:</b> 81 kDa	

## Applications

<b>Tested Applications:</b> IF/ICC, WB, ELISA	<b>Positive Controls:</b>
<b>Cited Applications:</b> WB, IF	WB : K-562 cells, HeLa cells, Jurkat cells, Y79 cells, A431 cells
<b>Species Specificity:</b> human	IF : MCF-7 cells,
<b>Cited Species:</b> human	

## Background Information

CCNT1, also named as CycT1, belongs to the cyclin family and Cyclin C subfamily. It is a regulatory subunit of the cyclin-dependent kinase pair (CDK9/cyclin-T1) complex which also called positive transcription elongation factor B (P-TEFb). In case of HIV or SIV infections, CCNT1 binds to the transactivation domain of the viral nuclear transcriptional activator, Tat, thereby increasing Tat's affinity for the transactivating response RNA element (TAR RNA). CCNT1 serves as an essential cofactor for Tat, by promoting RNA Pol II activation, allowing transcription of viral genes. The antibody is specific to CCNT1.

## Notable Publications

Author	Pubmed ID	Journal	Application
Gongwei Wu	28474697	Nat Commun	WB
Sebastian Eilebrecht	24623795	Nucleic Acids Res	WB
Ying E	37291517	BMC Cancer	WB,IF

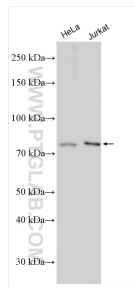
## Storage

**Storage:**  
Store at -20°C. Stable for one year after shipment.  
**Storage Buffer:**  
PBS with 0.02% sodium azide and 50% glycerol pH 7.3.  
Aliquoting is unnecessary for -20°C storage

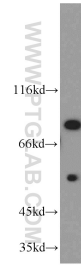
For technical support and original validation data for this product please contact:  
T: 4006900926 E: Proteintech-CN@ptglab.com W: ptgcn.com

This product is exclusively available under Proteintech Group brand and is not available to purchase from any other manufacturer.

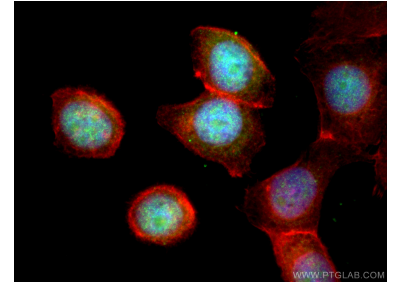
## Selected Validation Data



Various lysates were subjected to SDS PAGE followed by western blot with 20992-1-AP (Cyclin T1 antibody) at dilution of 1:8000 incubated at room temperature for 1.5 hours.



K-562 cells were subjected to SDS PAGE followed by western blot with 20992-1-AP (Cyclin T1 antibody) at dilution of 1:300 incubated at room temperature for 1.5 hours.



Immunofluorescent analysis of (4% PFA) fixed MCF-7 cells using Cyclin T1 antibody (20992-1-AP) at dilution of 1:200 and CoraLite®488-Conjugated AffiniPure Goat Anti-Rabbit IgG(H+L).