

TMEM106B Polyclonal antibody

Catalog Number: 20995-1-AP

Featured Product

7 Publications

Basic Information

Catalog Number:

20995-1-AP

Size:

700 µg/ml

Source:

Rabbit

Isotype:

IgG

Immunogen Catalog Number:

AG14264

GenBank Accession Number:

BC033901

GeneID (NCBI):

54664

UNIPROT ID:

Q9NUM4

Full Name:

transmembrane protein 106B

Calculated MW:

31 kDa

Observed MW:

31-35 kDa, 40-55 kDa

Purification Method:

Antigen affinity purification

Recommended Dilutions:

WB 1:500-1:2000

Applications

Tested Applications:

WB, ELISA

Cited Applications:

WB, IF, IHC

Species Specificity:

human, mouse

Cited Species:

human, mouse

Positive Controls:

WB : A549 cells, HeLa cells, HepG2 cells

Background Information

TMEM106B is a genetic risk factor for frontotemporal lobar degeneration with TDP-43 inclusions (FTLD-TDP). Amyotrophic lateral sclerosis (ALS), like FTLD-TDP, is characterized by pathological TDP-43 inclusions. TMEM106B expression in the brain may be linked to mechanisms of disease in FTLD-TDP and risk alleles confer genetic susceptibility by increasing gene expression. TMEM106B can be showed as 31-55 kDa and 70-90 kDa (Glycosylated or Dimer) form in western blot test. (PMID: 27543298, 22895706, PMID: 23136129).

Notable Publications

Author	Pubmed ID	Journal	Application
Kui Xiao	34714841	PLoS One	WB
Jun-Ichi Satoh	24684749	Alzheimers Res Ther	WB
Andrew Chang	35247328	Cell	IHC

Storage

Storage:

Store at -20°C. Stable for one year after shipment.

Storage Buffer:

PBS with 0.02% sodium azide and 50% glycerol pH 7.3.

Aliquoting is unnecessary for -20°C storage

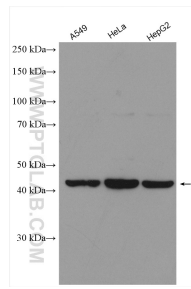
For technical support and original validation data for this product please contact:

T: 4006900926

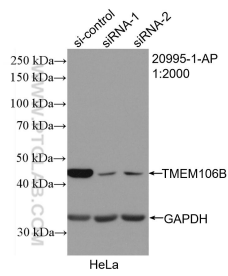
E: Proteintech-CN@ptglab.comW: ptgcn.com

This product is exclusively available under Proteintech Group brand and is not available to purchase from any other manufacturer.

Selected Validation Data



Various lysates were subjected to SDS PAGE followed by western blot with 20995-1-AP (TMEM106B antibody) at dilution of 1:1000 incubated at room temperature for 1.5 hours.



WB result of TMEM106B antibody (20995-1-AP; 1:2000; incubated at room temperature for 1.5 hours) with sh-Control and sh-TMEM106B transfected HeLa cells.