

For Research Use Only

# OXA1L Polyclonal antibody

Catalog Number: 21055-1-AP

Featured Product

10 Publications



## Basic Information

**Catalog Number:**

21055-1-AP

**Size:**

600 ug/ml

**Source:**

Rabbit

**Isotype:**

IgG

**Immunogen Catalog Number:**

AG13819

**GenBank Accession Number:**

BC001669

**GeneID (NCBI):**

5018

**UNIPROT ID:**

Q15070

**Full Name:**

oxidase (cytochrome c) assembly 1-like

**Calculated MW:**

437 aa, 49 kDa

**Observed MW:**

42 kDa

**Purification Method:**

Antigen affinity purification

**Recommended Dilutions:**

WB 1:2000-1:10000

IHC 1:50-1:500

IF/ICC 1:400-1:1600

## Applications

**Tested Applications:**

WB, IHC, IF/ICC, ELISA

**Cited Applications:**

WB, IF, IP

**Species Specificity:**

human, mouse, rat

**Cited Species:**

human, mouse

**Note-IHC: suggested antigen retrieval with TE buffer pH 9.0; (\*) Alternatively, antigen retrieval may be performed with citrate buffer pH 6.0**

**Positive Controls:**

**WB:** HepG2 cells, HeLa cells, NIH/3T3 cells, L02 cells, mouse liver tissue, rat liver tissue

**IHC:** human stomach cancer tissue,

**IF/ICC:** HepG2 cells,

## Background Information

OXA1L/Oxa1 is a member of the conserved Oxa1/YidC/Alb3 protein family and is required for cytochrome c oxidase assembly. The OXA1L protein was initially identified in yeast proteins involved in the biogenesis of the mitochondrial respiratory chain complexes. It locates in the inner membrane of mitochondria and may be involved in mediating the insertion of proteins from the matrix into the inner membrane.

## Notable Publications

Author	Pubmed ID	Journal	Application
Kyle Thompson	30201738	EMBO Mol Med	WB
Kah Ying Ng	34718584	Hum Mol Genet	WB
Kara L Perks	33024056	Aging (Albany NY)	WB

## Storage

**Storage:**

Store at -20°C. Stable for one year after shipment.

**Storage Buffer:**

PBS with 0.02% sodium azide and 50% glycerol pH 7.3.

Aliquoting is unnecessary for -20°C storage

For technical support and original validation data for this product please contact:

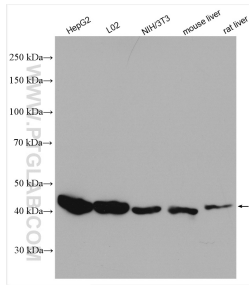
T: 4006900926

E: [Proteintech-CN@ptglab.com](mailto:Proteintech-CN@ptglab.com)

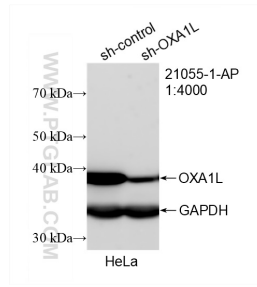
W: [ptgcn.com](http://ptgcn.com)

**This product is exclusively available under Proteintech Group brand and is not available to purchase from any other manufacturer.**

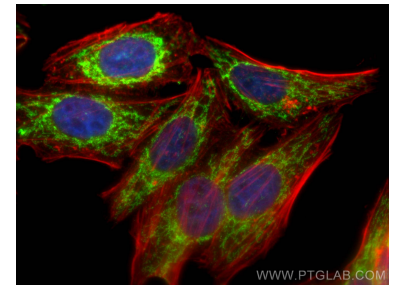
## Selected Validation Data



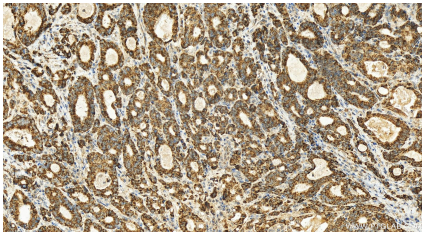
Various lysates were subjected to SDS PAGE followed by western blot with 21055-1-AP (OXA1L antibody) at dilution of 1:5000 incubated at room temperature for 1.5 hours.



WB result of OXA1L antibody (21055-1-AP; 1:4000; incubated at room temperature for 1.5 hours) with sh-Control and sh-OXA1L transfected HeLa cells.



Immunofluorescent analysis of (4% PFA) fixed HepG2 cells using OXA1L antibody (21055-1-AP) at dilution of 1:800 and CoraLite®488-Conjugated AffiniPure Goat Anti-Rabbit IgG(H+L), CL594-Phalloidin (red).



Immunohistochemical analysis of paraffin-embedded human stomach cancer tissue slide using 21055-1-AP (OXA1L antibody) at dilution of 1:200 (under 20x lens). Heat mediated antigen retrieval with Tris-EDTA buffer (pH 9.0).