

For Research Use Only

# SLITRK6 Polyclonal antibody, PBS Only

Catalog Number: 21150-1-PBS



## Basic Information

<b>Catalog Number:</b> 21150-1-PBS	<b>GenBank Accession Number:</b> BC101070	<b>Purification Method:</b> Antigen affinity purification
<b>Concentration:</b> 1 mg/ml	<b>GeneID (NCBI):</b> 84189	
<b>Source:</b> Rabbit	<b>UNIPROT ID:</b> Q9H5Y7	
<b>Isotype:</b> IgG	<b>Full Name:</b> SLIT and NTRK-like family, member 6	
<b>Immunogen Catalog Number:</b> AG15701	<b>Calculated MW:</b> 841 aa, 95 kDa	
	<b>Observed MW:</b> 95-100 kDa	

## Applications

**Tested Applications:**  
WB, IF/ICC, Indirect ELISA

**Species Specificity:**  
human, mouse, rat

## Background Information

SLITRK6 is a member of the SLITRK family. Members of this family are integral membrane proteins that are characterized by two N-terminal leucine-rich repeat (LRR) domains and a C-terminal region that shares homology with trk neurotrophin receptors. This protein functions as a regulator of neurite outgrowth required for normal hearing and vision. Mutations in SLITRK6 gene are a cause of myopia and deafness.

## Storage

**Storage:**  
Store at -80°C.  
**The product is shipped with ice packs. Upon receipt, store it immediately at -80°C**

**Storage Buffer:**  
PBS only

For technical support and original validation data for this product please contact:

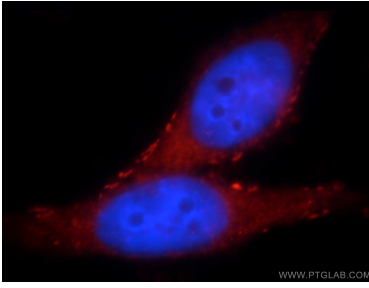
T: 4006900926

E: [Proteintech-CN@ptglab.com](mailto:Proteintech-CN@ptglab.com)

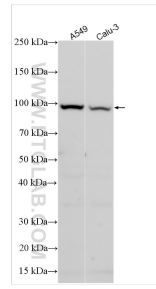
W: [ptgcn.com](http://ptgcn.com)

**This product is exclusively available under Proteintech Group brand and is not available to purchase from any other manufacturer.**

## Selected Validation Data



Immunofluorescent analysis of HepG2 cells, using SLITRK6 antibody 21150-1-AP at 1:25 dilution and Rhodamine-labeled goat anti-rabbit IgG (red). Blue pseudocolor = DAPI (fluorescent DNA dye). This data was developed using the same antibody clone with 21150-1-PBS in a different storage buffer formulation.



Various lysates were subjected to SDS PAGE followed by western blot with 21150-1-AP (SLITRK6 antibody) at dilution of 1:500 incubated at room temperature for 1.5 hours. This data was developed using the same antibody clone with 21150-1-PBS in a different storage buffer formulation.