

For Research Use Only

Kiz Polyclonal antibody

Catalog Number: 21177-1-AP **2 Publications**



Basic Information

Catalog Number: 21177-1-AP	GenBank Accession Number: BC045826	Purification Method: Antigen affinity purification
Size: 800 µg/ml	GeneID (NCBI): 55857	Recommended Dilutions: WB 1:500-1:3000
Source: Rabbit	UNIPROT ID: Q2M2Z5	IP 0.5-4.0 µg for 1.0-3.0 mg of total protein lysate
Isotype: IgG	Full Name: non-protein coding RNA 153	IHC 1:20-1:200
Immunogen Catalog Number: AG15454	Calculated MW: 673 aa, 75 kDa	IF 1:500-1:2000
	Observed MW: 90-100 kDa	

Applications

Tested Applications: IF/ICC, IHC, IP, WB, ELISA	Positive Controls: WB : HeLa cells, human brain tissue
Cited Applications: IF	IP : HeLa cells,
Species Specificity: human	IHC : human testis tissue,
Cited Species: human, mouse	IF : HeLa cells, hTERT-RPE1 cells
Note-IHC: suggested antigen retrieval with TE buffer pH 9.0; (*) Alternatively, antigen retrieval may be performed with citrate buffer pH 6.0	

Background Information

Notable Publications

Author	Pubmed ID	Journal	Application
Tianyu Wu	36395215	Science	IF
Chun So	31249032	Science	IF

Storage

Storage:
Store at -20°C. Stable for one year after shipment.
Storage Buffer:
PBS with 0.02% sodium azide and 50% glycerol pH 7.3.
Aliquoting is unnecessary for -20°C storage

For technical support and original validation data for this product please contact:

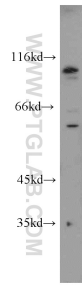
T: 4006900926

E: Proteintech-CN@ptglab.com

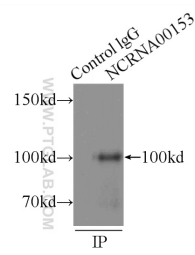
W: ptgcn.com

This product is exclusively available under Proteintech Group brand and is not available to purchase from any other manufacturer.

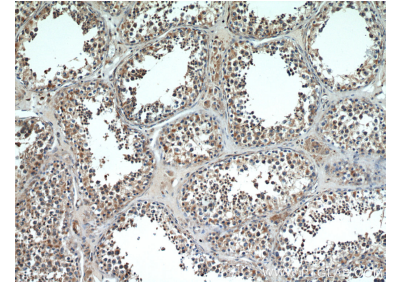
Selected Validation Data



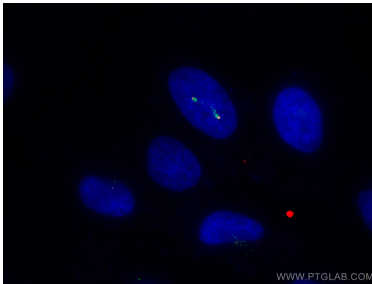
HeLa cells were subjected to SDS PAGE followed by western blot with 21177-1-AP (C20orf19 antibody) at dilution of 1:1000 incubated at room temperature for 1.5 hours.



IP result of anti-Kiz (IP:21177-1-AP, 3ug; Detection:21177-1-AP 1:500) with HeLa cells lysate 2000ug.



Immunohistochemical analysis of paraffin-embedded human testis using 21177-1-AP (C20orf19 antibody) at dilution of 1:100 (under 10x lens).



Immunofluorescent analysis of (4% PFA) fixed HeLa cells using Kiz antibody (21177-1-AP) at dilution of 1:1000 and CoraLite®488-Conjugated AffiniPure Goat Anti-Rabbit IgG(H+L), Gamma Tubulin antibody (66320-1-Ig, Clone: 3F9H8, red).