

For Research Use Only

CBLL1 Polyclonal antibody

Catalog Number: 21179-1-AP

Featured Product

9 Publications



Basic Information

Catalog Number:

21179-1-AP

Size:

800 µg/ml

Source:

Rabbit

Isotype:

IgG

Immunogen Catalog Number:

AG15463

GenBank Accession Number:

BC027460

GeneID (NCBI):

79872

UNIPROT ID:

Q75N03

Full Name:

Cas-Br-M (murine) ecotropic retroviral transforming sequence-like 1

Calculated MW:

491 aa, 55 kDa

Observed MW:

55-60 kDa

Purification Method:

Antigen affinity purification

Recommended Dilutions:

WB 1:1000-1:6000

IHC 1:50-1:500

IF 1:200-1:800

Applications

Tested Applications:

WB, IF/ICC, IHC, ELISA

Cited Applications:

WB, IF, IHC

Species Specificity:

human, mouse

Cited Species:

human, mouse

Note-IHC: suggested antigen retrieval with TE buffer pH 9.0; (*) Alternatively, antigen retrieval may be performed with citrate buffer pH 6.0

Positive Controls:

WB : HEK-293 cells, HeLa cells, MCF-7 cells

IHC : human colon cancer tissue, human lung cancer tissue

IF : HepG2 cells,

Background Information

Cbl proto - oncogene E3 ubiquitin protein ligase - like 1, RNF188, Hakai (CBLL1) is an evolutionarily conserved E3 ubiquitin ligase containing a RING - finger domain. CBLL1 contains a typical RING - finger, short pTyr - binding domain, and proline - rich domain. CBLL1 expression is upregulated in human colon and gastric cancer tissues, and CBLL1 has been reported to induce anchorage - dependent cell growth. CBLL1 immunostaining was observed in both the nuclei and cytoplasm of cancer cells. (PMID: 31124298, PMID: 31646569, PMID: 21191016)

Notable Publications

| Author | Pubmed ID | Journal | Application |
|-------------------|-----------|---------------|-------------|
| Kyoko Sako-Kubota | 25253721 | Mol Biol Cell | WB |
| Zi Liu | 36071249 | Med Oncol | WB |
| Chunmei Hu | 34764728 | J Ginseng Res | IF |

Storage

Storage:

Store at -20°C. Stable for one year after shipment.

Storage Buffer:

PBS with 0.02% sodium azide and 50% glycerol pH 7.3.

Aliquoting is unnecessary for -20°C storage

For technical support and original validation data for this product please contact:

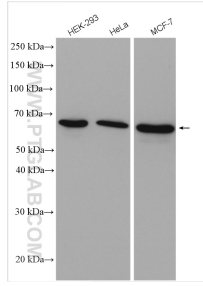
T: 4006900926

E: Proteintech-CN@ptglab.com

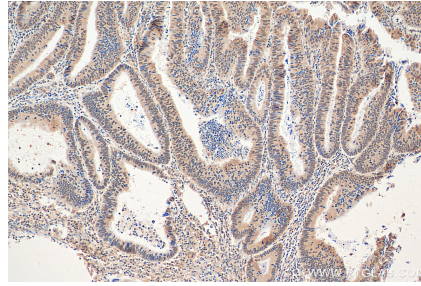
W: ptgcn.com

This product is exclusively available under Proteintech Group brand and is not available to purchase from any other manufacturer.

Selected Validation Data



Various lysates were subjected to SDS PAGE followed by western blot with 21179-1-AP (CBL1 antibody) at dilution of 1:3000 incubated at room temperature for 1.5 hours.



Immunohistochemical analysis of paraffin-embedded human colon cancer tissue slide using 21179-1-AP (CBL1 antibody) at dilution of 1:200 (under 10x lens). Heat mediated antigen retrieval with Tris-EDTA buffer (pH 9.0).



Immunofluorescent analysis of (4% PFA) fixed HepG2 cells using CBL1 antibody (21179-1-AP) at dilution of 1:400 and CoraLite®488-Conjugated AffiniPure Goat Anti-Rabbit IgG(H+L), CL594-Phalloidin (red).