

For Research Use Only

# STIM2 Polyclonal antibody

Catalog Number: 21192-1-AP

Featured Product

11 Publications



## Basic Information

### Catalog Number:

21192-1-AP

### Size:

353 µg/ml

### Source:

Rabbit

### Isotype:

IgG

### Immunogen Catalog Number:

AG15530

### GenBank Accession Number:

BC146661

### GeneID (NCBI):

57620

### UNIPROT ID:

Q9P246

### Full Name:

stromal interaction molecule 2

### Calculated MW:

754 aa, 85 kDa

### Observed MW:

85-115 kDa

### Purification Method:

Antigen affinity purification

### Recommended Dilutions:

WB 1:500-1:3000

IP 0.5-4.0 µg for 1.0-3.0 mg of total

protein lysate

IHC 1:50-1:500

## Applications

### Tested Applications:

IHC, IP, WB, ELISA

### Cited Applications:

WB, IP, IF

### Species Specificity:

human, mouse, rat

### Cited Species:

human, mouse

### Positive Controls:

WB : HeLa cells, HEK-293 cells, Jurkat cells

IP : HEK-293 cells,

IHC : mouse spleen tissue, human brain tissue, human spleen tissue

**Note-IHC: suggested antigen retrieval with TE buffer pH 9.0; (\*) Alternatively, antigen retrieval may be performed with citrate buffer pH 6.0**

## Background Information

STIM2, also named as KIAA1482, functions as a highly sensitive Ca<sup>2+</sup> sensor in the endoplasmic reticulum which activates both store-operated and store-independent Ca<sup>2+</sup>-influx. Regulates basal cytosolic and endoplasmic reticulum Ca<sup>2+</sup> concentrations. Upon mild variations of the endoplasmic reticulum Ca<sup>2+</sup> concentration, STIM2 translocates from the endoplasmic reticulum to the plasma membrane where it probably activates the Ca<sup>2+</sup> release-activated Ca<sup>2+</sup> (CRAC) channels ORAI1, ORAI2 and ORAI3. STIM2 may inhibit STIM1-mediated Ca<sup>2+</sup> influx. STIM2 has 2 isoforms 105kd and 115kd with Differential levels of phosphorylation.

## Notable Publications

Author	Pubmed ID	Journal	Application
Zhuo Chen	34686338	Cell Rep	IF
Siheng Zhang	28479254	Biochem Biophys Res Commun	WB
Girish Ramesh	33730587	Cell Rep	WB

## Storage

### Storage:

Store at -20°C. Stable for one year after shipment.

### Storage Buffer:

PBS with 0.02% sodium azide and 50% glycerol pH 7.3.

Aliquoting is unnecessary for -20°C storage

For technical support and original validation data for this product please contact:

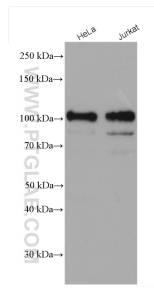
T: 4006900926

E: Proteintech-CN@ptglab.com

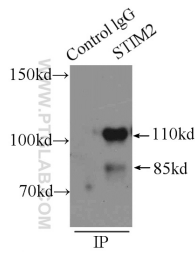
W: ptgcn.com

**This product is exclusively available under Proteintech Group brand and is not available to purchase from any other manufacturer.**

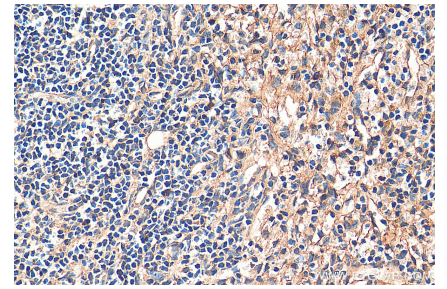
## Selected Validation Data



Various lysates were subjected to SDS PAGE followed by western blot with 21192-1-AP (STIM2 antibody) at dilution of 1:1500 incubated at room temperature for 1.5 hours.



IP result of anti-STIM2 (IP:21192-1-AP, 3ug; Detection:21192-1-AP 1:500) with HEK-293 cells lysate 2000ug.



Immunohistochemical analysis of paraffin-embedded mouse spleen tissue slide using 21192-1-AP (STIM2 antibody) at dilution of 1:200 (under 40x lens). Heat mediated antigen retrieval with Tris-EDTA buffer (pH 9.0).