

For Research Use Only

# TET2 Polyclonal antibody

Catalog Number: 21207-1-AP

Featured Product

61 Publications



## Basic Information

**Catalog Number:**

21207-1-AP

**Size:**

800 µg/ml

**Source:**

Rabbit

**Isotype:**

IgG

**Immunogen Catalog Number:**

AG15583

**GenBank Accession Number:**

BC150180

**GeneID (NCBI):**

54790

**UNIPROT ID:**

Q6N021

**Full Name:**

tet oncogene family member 2

**Calculated MW:**

2002 aa, 224 kDa

**Observed MW:**

130 kDa, 250 kDa

**Purification Method:**

Antigen affinity purification

**Recommended Dilutions:**

WB 1:500-1:2000

IP 0.5-4.0 µg for 1.0-3.0 mg of total protein lysate

IHC 1:250-1:1000

IF 1:50-1:500

## Applications

**Tested Applications:**

WB, IP, IF/ICC, IHC, ELISA

**Cited Applications:**

WB, IF, IHC, CoIP, ChIP

**Species Specificity:**

human, mouse

**Cited Species:**

human, goat, sheep, mouse

**Note-IHC: suggested antigen retrieval with TE buffer pH 9.0; (\*) Alternatively, antigen retrieval may be performed with citrate buffer pH 6.0**

**Positive Controls:**

**WB:** A431 cells, HL-60 cells, HEK-293 cells, HeLa cells, HepG2 cells, K-562 cells

**IP:** mouse brain tissue,

**IHC:** human colon cancer tissue,

**IF:** Neuro-2a cells,

## Background Information

TET2 is an enzyme which converts 5-methylcytosine (5-mC) to 5-hydroxymethylcytosine (5-hmC) in DNA and is important for normal myelopoiesis. TET2 mutations are frequently observed in myeloid malignancies, including myeloproliferative neoplasms. TET2 is broadly expressed in a variety of tissues. In healthy tissues, TET2 expression was shown to be elevated in hematopoietic cells with highest expression in granulocytes. Three isoforms of TET2 exists due to the alternative splicing. 220-250 kDa bands represent the full-length isoform; 130-133 kDa bands represent the nuclear isoforms of TET2. (PMID: 24615693) This antibody recognizes all three isoforms of TET2.

## Notable Publications

Author	Pubmed ID	Journal	Application
Shanshan Li	33014158	Oncol Lett	WB
Wei Zhong	30456333	JACC Basic Transl Sci	WB
Xiang Sun	31515281	J Exp Med	WB

## Storage

**Storage:**

Store at -20°C. Stable for one year after shipment.

**Storage Buffer:**

PBS with 0.02% sodium azide and 50% glycerol pH 7.3.

Aliquoting is unnecessary for -20°C storage

For technical support and original validation data for this product please contact:

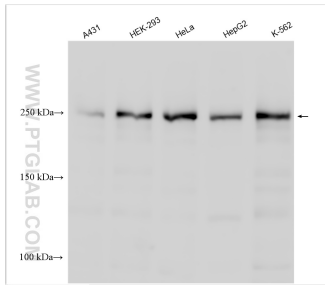
T: 4006900926

E: Proteintech-CN@ptglab.com

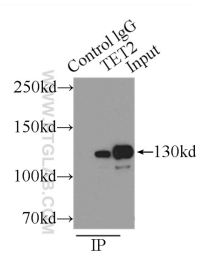
W: ptgcn.com

**This product is exclusively available under Proteintech Group brand and is not available to purchase from any other manufacturer.**

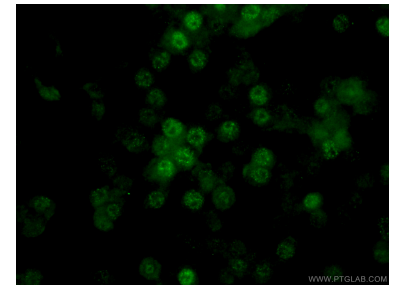
## Selected Validation Data



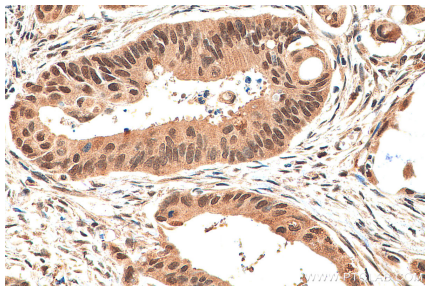
Various lysates were subjected to SDS PAGE followed by western blot with 21207-1-AP (TET2 antibody) at dilution of 1:1000 incubated at room temperature for 1.5 hours.



IP result of anti-TET2 (IP:21207-1-AP, 3ug; Detection:21207-1-AP 1:500) with mouse brain tissue lysate 4000ug.



Immunofluorescent analysis of (4% PFA) fixed Neuro-2a cells using 21207-1-AP (TET2 antibody) at dilution of 1:50 and Alexa Fluor 488-Conjugated AffiniPure Goat Anti-Rabbit IgG(H+L).



Immunohistochemical analysis of paraffin-embedded human colon cancer tissue slide using 21207-1-AP (TET2 antibody) at dilution of 1:500 (under 40x lens). Heat mediated antigen retrieval with Tris-EDTA buffer (pH 9.0).