

For Research Use Only

PLK5 Polyclonal antibody

Catalog Number: 21299-1-AP **1 Publications**



Basic Information

Catalog Number: 21299-1-AP	GenBank Accession Number: BC100792	Purification Method: Antigen affinity purification
Size: 550 µg/ml	GeneID (NCBI): 126520	Recommended Dilutions: WB 1:500-1:1000
Source: Rabbit	UNIPROT ID: Q496M5	IHC 1:20-1:200
Isotype: IgG	Full Name: polo-like kinase 5 pseudogene	IF/ICC 1:50-1:500
Immunogen Catalog Number: AG15881	Calculated MW: 336 aa, 36 kDa	
	Observed MW: 55-60 kDa	

Applications

Tested Applications: WB, IHC, IF/ICC, ELISA	Positive Controls:
Cited Applications: WB, IHC, IF	WB: K-562 cells, mouse testis tissue, mouse kidney tissue
Species Specificity: human, mouse	IHC: human brain tissue, human testis tissue
Cited Species: human	IF/ICC: HeLa cells,

Note-IHC: suggested antigen retrieval with TE buffer pH 9.0; (*) Alternatively, antigen retrieval may be performed with citrate buffer pH 6.0

Background Information

PLK5, also named as PLK5P, is an inactive serine/threonine-protein kinase that plays a role in cell cycle progression and neuronal differentiation. Compared with mouse Plk5, the protein kinase domain of human PLK5 is truncated. This is the reason that the MW of mouse Plk5 is about 50-70 kDa, the MW of human PLK5 is about 32-40 kDa. PLK5 is located in the cytoplasm and nucleus(Uniprot). This antibody detects both PLK5 gene of human and mouse.

Notable Publications

Author	Pubmed ID	Journal	Application
Yitian Zhang	36709605	Eur J Cell Biol	WB,IHC,IF

Storage

Storage:
Store at -20°C. Stable for one year after shipment.
Storage Buffer:
PBS with 0.02% sodium azide and 50% glycerol pH 7.3.
Aliquoting is unnecessary for -20°C storage

For technical support and original validation data for this product please contact:

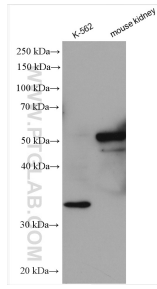
T: 4006900926

E: Proteintech-CN@ptglab.com

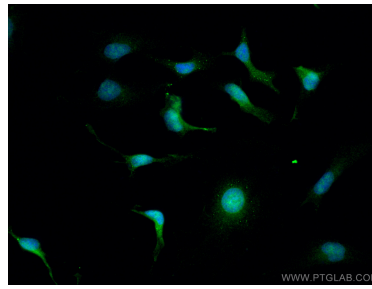
W: ptgcn.com

This product is exclusively available under Proteintech Group brand and is not available to purchase from any other manufacturer.

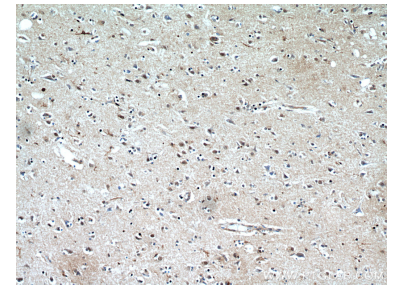
Selected Validation Data



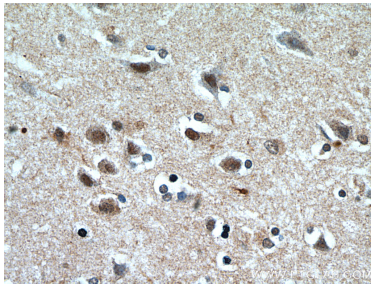
Various lysates were subjected to SDS PAGE followed by western blot with 21299-1-AP (PLK5 antibody) at dilution of 1:600 incubated at room temperature for 1.5 hours.



Immunofluorescent analysis of (4% PFA) fixed HeLa cells using PLK5 antibody (21299-1-AP) at dilution of 1:200 and CoraLite®488-Conjugated AffiniPure Goat Anti-Rabbit IgG(H+L).



Immunohistochemical analysis of paraffin-embedded human brain using 21299-1-AP (PLK5 antibody) at dilution of 1:50 (under 10x lens).



Immunohistochemical analysis of paraffin-embedded human brain using 21299-1-AP (PLK5 antibody) at dilution of 1:50 (under 40x lens).