

For Research Use Only

# CHD2 Polyclonal antibody

Catalog Number: 21334-1-AP

Featured Product



## Basic Information

**Catalog Number:**

21334-1-AP

**Size:**

600 ug/ml

**Source:**

Rabbit

**Isotype:**

IgG

**Immunogen Catalog Number:**

AG15429

**GenBank Accession Number:**

BC020810

**GeneID (NCBI):**

1106

**UNIPROT ID:**

O14647

**Full Name:**

chromodomain helicase DNA binding protein 2

**Calculated MW:**

1828 aa, 211 kDa

**Observed MW:**

230-250 kDa

**Purification Method:**

Antigen affinity purification

**Recommended Dilutions:**

WB 1:1000-1:8000

IHC 1:50-1:500

IF/ICC 1:200-1:800

## Applications

**Tested Applications:**

WB, IHC, IF/ICC, ELISA

**Species Specificity:**

human, rat

**Note-IHC: suggested antigen retrieval with TE buffer pH 9.0; (\*) Alternatively, antigen retrieval may be performed with citrate buffer pH 6.0**

**Positive Controls:**

WB : HEK-293 cells, Jurkat cells, K-562 cells

IHC : rat brain tissue, mouse testis tissue

IF/ICC : HeLa cells,

## Background Information

Chromodomain helicase DNA binding protein 2 (CHD2), a member of the sucrose nonfermenting (SNF-2) protein family of epigenetic regulators, which use the energy from ATP hydrolysis to change nucleosome positioning, composition and chromatin structure (PMID: 33435571). CHD2 protein plays a critical role in embryonic development, tumor suppression and survival (PMID: 24834135). In addition, CHD2 has been proposed to prevent breast cancer initiation, and CHD2 mutations are associated with chronic lymphocytic leukemia.

## Storage

**Storage:**

Store at -20°C. Stable for one year after shipment.

**Storage Buffer:**

PBS with 0.02% sodium azide and 50% glycerol pH 7.3.

Aliquoting is unnecessary for -20°C storage

For technical support and original validation data for this product please contact:

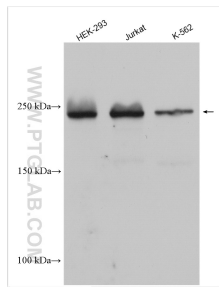
T: 4006900926

E: [Proteintech-CN@ptglab.com](mailto:Proteintech-CN@ptglab.com)

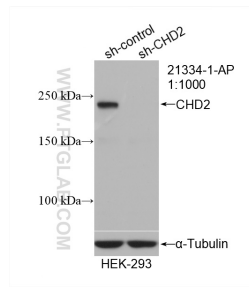
W: [ptgcn.com](http://ptgcn.com)

**This product is exclusively available under Proteintech Group brand and is not available to purchase from any other manufacturer.**

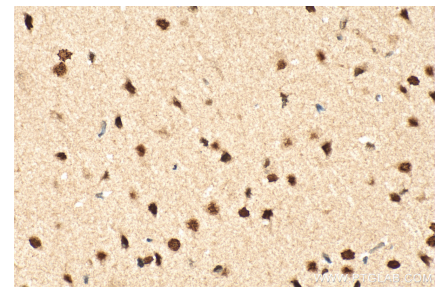
## Selected Validation Data



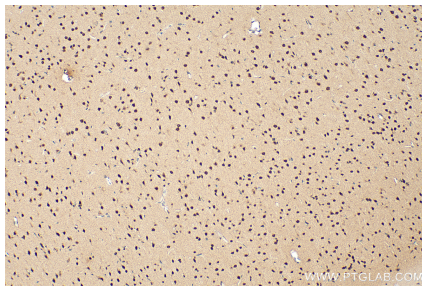
Various lysates were subjected to SDS PAGE followed by western blot with 21334-1-AP (CHD2 antibody) at dilution of 1:4000 incubated at room temperature for 1.5 hours.



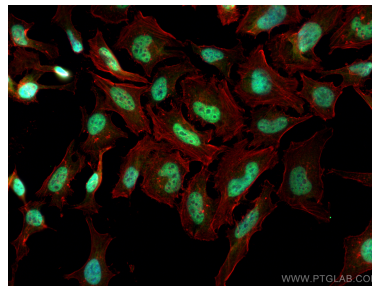
WB result of CHD2 antibody (21334-1-AP; 1:1000; incubated at room temperature for 1.5 hours) with sh-Control and sh-CHD2 transfected HEK-293 cells.



Immunohistochemical analysis of paraffin-embedded rat brain tissue slide using 21334-1-AP (CHD2 antibody) at dilution of 1:200 (under 40x lens). Heat mediated antigen retrieval with Tris-EDTA buffer (pH 9.0).



Immunohistochemical analysis of paraffin-embedded rat brain tissue slide using 21334-1-AP (CHD2 antibody) at dilution of 1:200 (under 10x lens). Heat mediated antigen retrieval with Tris-EDTA buffer (pH 9.0).



Immunofluorescent analysis of (4% PFA) fixed HeLa cells using CHD2 antibody (21334-1-AP) at dilution of 1:400 and CoraLite@488-Conjugated AffiniPure Goat Anti-Rabbit IgG(H+L), CL594-Phalloidin (red).