

For Research Use Only

# C21orf66 Polyclonal antibody

Catalog Number: 21357-1-AP **2 Publications**



## Basic Information

<b>Catalog Number:</b> 21357-1-AP	<b>GenBank Accession Number:</b> BC030539	<b>Purification Method:</b> Antigen affinity purification
<b>Size:</b> 600 ug/ml	<b>GeneID (NCBI):</b> 94104	<b>Recommended Dilutions:</b> WB 1:1000-1:4000 IHC 1:250-1:1000 IF/ICC 1:10-1:100
<b>Source:</b> Rabbit	<b>UNIPROT ID:</b> Q9Y5B6	
<b>Isotype:</b> IgG	<b>Full Name:</b> chromosome 21 open reading frame 66	
<b>Immunogen Catalog Number:</b> AG15789	<b>Calculated MW:</b> 917 aa, 105 kDa	
	<b>Observed MW:</b> 93 kDa	

## Applications

<b>Tested Applications:</b> WB, IHC, IF/ICC, ELISA	<b>Positive Controls:</b> WB : human brain tissue, IHC : human renal cell carcinoma tissue, human pancreas cancer tissue, mouse liver tissue IF/ICC : Hela cells,
<b>Cited Applications:</b> WB	
<b>Species Specificity:</b> human, mouse, rat	
<b>Cited Species:</b> mouse	
<b>Note-IHC: suggested antigen retrieval with TE buffer pH 9.0; (*) Alternatively, antigen retrieval may be performed with citrate buffer pH 6.0</b>	

## Background Information

### Notable Publications

Author	Pubmed ID	Journal	Application
Wenting Li	38750609	Immunology	WB
Wenting Li	37404821	Front Immunol	WB

## Storage

**Storage:**  
Store at -20°C. Stable for one year after shipment.  
**Storage Buffer:**  
PBS with 0.02% sodium azide and 50% glycerol pH 7.3.  
Aliquoting is unnecessary for -20°C storage

For technical support and original validation data for this product please contact:

T: 4006900926

E: [Proteintech-CN@ptglab.com](mailto:Proteintech-CN@ptglab.com)

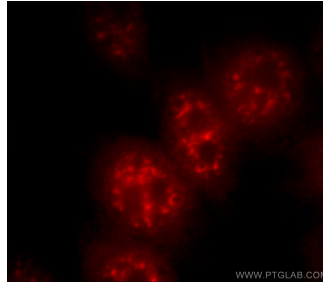
W: [ptgcn.com](http://ptgcn.com)

**This product is exclusively available under Proteintech Group brand and is not available to purchase from any other manufacturer.**

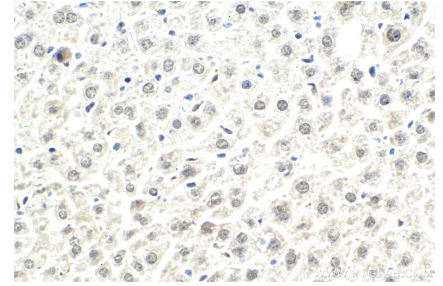
## Selected Validation Data



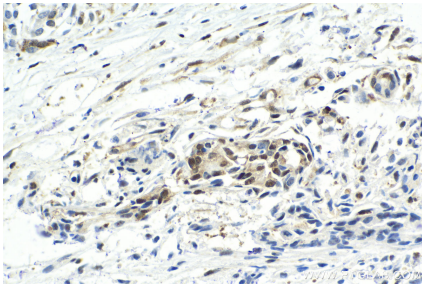
human brain tissue were subjected to SDS PAGE followed by western blot with 21357-1-AP (C21orf66 antibody) at dilution of 1:2000 incubated at room temperature for 1.5 hours.



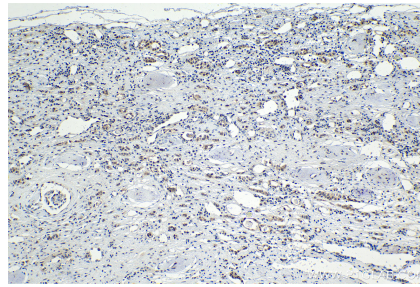
Immunofluorescent analysis of HeLa cells, using C21orf66 antibody 21357-1-AP at 1:25 dilution and Rhodamine-labeled goat anti-rabbit IgG (red).



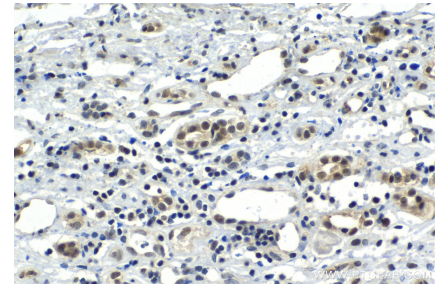
Immunohistochemical analysis of paraffin-embedded mouse liver tissue slide using 21357-1-AP (C21orf66 antibody) at dilution of 1:500 (under 40x lens). Heat mediated antigen retrieval with Tris-EDTA buffer (pH 9.0).



Immunohistochemical analysis of paraffin-embedded human pancreas cancer tissue slide using 21357-1-AP (C21orf66 antibody) at dilution of 1:500 (under 40x lens). Heat mediated antigen retrieval with Tris-EDTA buffer (pH 9.0).



Immunohistochemical analysis of paraffin-embedded human renal cell carcinoma tissue slide using 21357-1-AP (C21orf66 antibody) at dilution of 1:500 (under 10x lens). Heat mediated antigen retrieval with Tris-EDTA buffer (pH 9.0).



Immunohistochemical analysis of paraffin-embedded human renal cell carcinoma tissue slide using 21357-1-AP (C21orf66 antibody) at dilution of 1:500 (under 40x lens). Heat mediated antigen retrieval with Tris-EDTA buffer (pH 9.0).