

For Research Use Only

# PAK1 Polyclonal antibody

Catalog Number: 21401-1-AP

Featured Product

18 Publications



## Basic Information

**Catalog Number:**

21401-1-AP

**Size:**

1200 µg/ml

**Source:**

Rabbit

**Isotype:**

IgG

**Immunogen Catalog Number:**

AG16102

**GenBank Accession Number:**

BC109299

**GeneID (NCBI):**

5058

**UNIPROT ID:**

Q13153

**Full Name:**

p21 protein (Cdc42/Rac)-activated kinase 1

**Calculated MW:**

553 aa, 62 kDa

**Observed MW:**

61-65 kDa

**Purification Method:**

Antigen affinity purification

**Recommended Dilutions:**

WB 1:1000-1:6000

IP 0.5-4.0 µg for 1.0-3.0 mg of total protein lysate

IHC 1:50-1:500

IF 1:200-1:800

## Applications

**Tested Applications:**

IF/ICC, IHC, IP, WB, ELISA

**Cited Applications:**

CoIP, IF, IHC, WB

**Species Specificity:**

human, mouse, rat

**Cited Species:**

human, chicken, rat, mouse

**Positive Controls:**

**WB:** C6 cells, Jurkat cells, NIH/3T3 cells, MCF-7 cells, HeLa cells, K-562 cells

**IP:** K-562 cells,

**IHC:** mouse brain tissue, human breast cancer tissue

**IF:** C6 cells,

**Note-IHC: suggested antigen retrieval with TE buffer pH 9.0; (\*) Alternatively, antigen retrieval may be performed with citrate buffer pH 6.0**

## Background Information

The p21-Activated kinase 1 (PAK1), a member of serine-threonine kinases family, was initially identified as an interactor of the Rho GTPases RAC1 and CDC42, which affect a wide range of processes associated with cell motility, survival, metabolism, cell cycle, proliferation, transformation, stress, inflammation, and gene expression (PMID: 32863957). PAK1 is over-expressed in various malignancies such as ovarian, breast, lung, and bladder cancers, and is closely associated with tumor invasion.

## Notable Publications

Author	Pubmed ID	Journal	Application
Yu-Yuan Zhang	36259516	J Biol Chem	WB
Dongmei Wang	36224320	Mol Neurobiol	IF
Pei Xia	30442385	Gynecol Oncol	WB

## Storage

**Storage:**

Store at -20°C. Stable for one year after shipment.

**Storage Buffer:**

PBS with 0.02% sodium azide and 50% glycerol pH 7.3.

Aliquoting is unnecessary for -20°C storage

For technical support and original validation data for this product please contact:

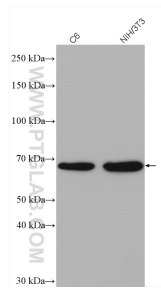
T: 4006900926

E: Proteintech-CN@ptglab.com

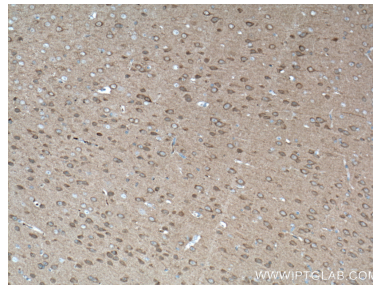
W: ptgcn.com

**This product is exclusively available under Proteintech Group brand and is not available to purchase from any other manufacturer.**

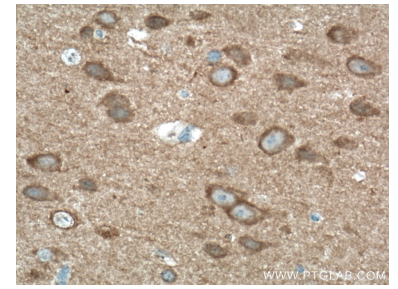
## Selected Validation Data



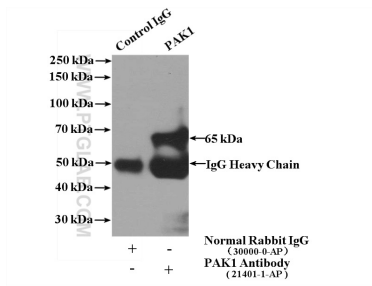
Various lysates were subjected to SDS PAGE followed by western blot with 21401-1-AP (PAK1 antibody) at dilution of 1:3000 incubated at room temperature for 1.5 hours.



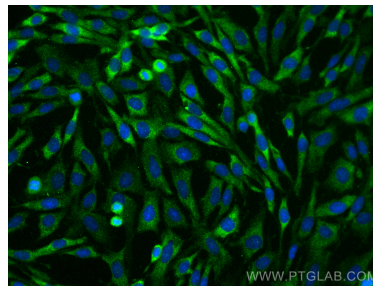
Immunohistochemical analysis of paraffin-embedded mouse brain tissue slide using 21401-1-AP (PAK1 antibody) at dilution of 1:200 (under 10x lens. Heat mediated antigen retrieval with Tris-EDTA buffer (pH 9.0).



Immunohistochemical analysis of paraffin-embedded mouse brain tissue slide using 21401-1-AP (PAK1 antibody) at dilution of 1:200 (under 40x lens. Heat mediated antigen retrieval with Tris-EDTA buffer (pH 9.0).



IP result of anti-PAK1 (IP:21401-1-AP, 4ug; Detection:21401-1-AP 1:1000) with K-562 cells lysate 3200ug.



Immunofluorescent analysis of (-20°C Ethanol) fixed C6 cells using PAK1 antibody (21401-1-AP) at dilution of 1:400 and CoraLite®488-Conjugated AffiniPure Goat Anti-Rabbit IgG(H+L).