

For Research Use Only

# GPR50 Polyclonal antibody

Catalog Number: 21514-1-AP **1 Publications**



## Basic Information

**Catalog Number:**

21514-1-AP

**Size:**

700 µg/ml

**Source:**

Rabbit

**Isotype:**

IgG

**Immunogen Catalog Number:**

AG16040

**GenBank Accession Number:**

BC103696

**GeneID (NCBI):**

9248

**UNIPROT ID:**

Q13585

**Full Name:**

G protein-coupled receptor 50

**Calculated MW:**

617 aa, 67 kDa

**Observed MW:**

67 kDa

**Purification Method:**

Antigen affinity purification

**Recommended Dilutions:**

WB 1:1000-1:8000

IP 0.5-4.0 µg for 1.0-3.0 mg of total protein lysate

IF/ICC 1:20-1:200

## Applications

**Tested Applications:**

WB, IF/ICC, IP, ELISA

**Cited Applications:**

WB, CoIP

**Species Specificity:**

human, mouse

**Cited Species:**

mouse

**Positive Controls:**

WB : HEK-293 cells, HeLa cells

IP : HeLa cells,

IF/ICC : SH-SY5Y cells, mouse Hippocampus tissue

## Background Information

### Notable Publications

| Author       | Pubmed ID | Journal        | Application |
|--------------|-----------|----------------|-------------|
| Ji-Chuan Liu | 39143050  | Cell Death Dis | WB, CoIP    |

## Storage

**Storage:**

Store at -20°C. Stable for one year after shipment.

**Storage Buffer:**

PBS with 0.02% sodium azide and 50% glycerol pH 7.3.

Aliquoting is unnecessary for -20°C storage

For technical support and original validation data for this product please contact:

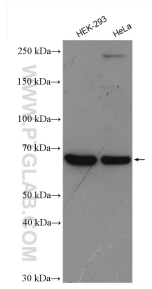
T: 4006900926

E: [Proteintech-CN@ptglab.com](mailto:Proteintech-CN@ptglab.com)

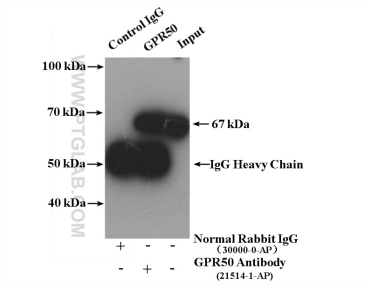
W: [ptgcn.com](http://ptgcn.com)

**This product is exclusively available under Proteintech Group brand and is not available to purchase from any other manufacturer.**

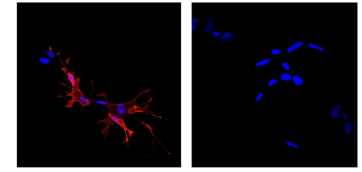
## Selected Validation Data



Various lysates were subjected to SDS PAGE followed by western blot with 21514-1-AP (GPR50 antibody) at dilution of 1:4000 incubated at room temperature for 1.5 hours.



HeLa cells were subjected to SDS PAGE followed by western blot with 21514-1-AP (GPR50 antibody) at dilution of 1:500.

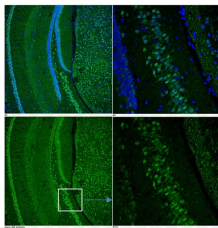


1:1000

No primary antibody control

Sample: SH-SY5Y cells, GPR50 transfected  
optimal dilution: 1 in 1000

IF result of GPR50 antibody (21514-1-AP, 1:1,000) with SH-SY5Y cells transfected with GPR50 by Dr. Qian Li, University of Edinburgh.



Hippocampus, C57 BL/6 mouse, adult  
Optimal dilution: 1 in 50

IF result of GPR50 antibody (21514-1-AP, 1:50) with mouse hippocampus by Dr. Qian Li, University of Edinburgh.