

For Research Use Only

# CYP2A6 Polyclonal antibody

Catalog Number: 21721-1-AP **6 Publications**



## Basic Information

<b>Catalog Number:</b> 21721-1-AP	<b>GenBank Accession Number:</b> BC096253	<b>Purification Method:</b> Antigen affinity purification
<b>Size:</b> 400 µg/ml	<b>GeneID (NCBI):</b> 1548	<b>Recommended Dilutions:</b> WB 1:2000-1:10000 IHC 1:50-1:500
<b>Source:</b> Rabbit	<b>UNIPROT ID:</b> P11509	
<b>Isotype:</b> IgG	<b>Full Name:</b> cytochrome P450, family 2, subfamily A, polypeptide 6	
<b>Immunogen Catalog Number:</b> AG16377	<b>Calculated MW:</b> 494 aa, 57 kDa	
	<b>Observed MW:</b> 50 kDa	

## Applications

<b>Tested Applications:</b> IHC, WB, ELISA	<b>Positive Controls:</b>
<b>Cited Applications:</b> WB	<b>WB:</b> mouse liver tissue, HepG2 cells, mouse lung tissue, rat liver tissue
<b>Species Specificity:</b> human, mouse, rat	<b>IHC:</b> human liver tissue, human liver cancer tissue
<b>Cited Species:</b> human, mouse	
<b>Note-IHC: suggested antigen retrieval with TE buffer pH 9.0; (*) Alternatively, antigen retrieval may be performed with citrate buffer pH 6.0</b>	

## Background Information

### Notable Publications

Author	Pubmed ID	Journal	Application
Ashley A Untereiner	29061341	Biochem Pharmacol	WB
Shotaro Uehara	35416115	Xenobiotica	WB
Yuya Yoshida	38522403	Biochem Biophys Res Commun	

## Storage

**Storage:**  
Store at -20°C. Stable for one year after shipment.  
**Storage Buffer:**  
PBS with 0.02% sodium azide and 50% glycerol pH 7.3.  
Aliquoting is unnecessary for -20°C storage

For technical support and original validation data for this product please contact:

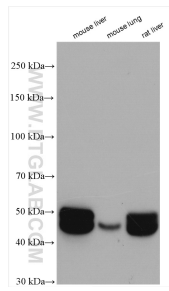
T: 4006900926

E: [Proteintech-CN@ptglab.com](mailto:Proteintech-CN@ptglab.com)

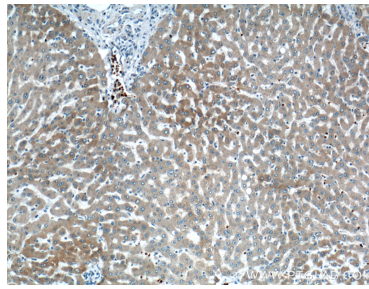
W: [ptgcn.com](http://ptgcn.com)

**This product is exclusively available under Proteintech Group brand and is not available to purchase from any other manufacturer.**

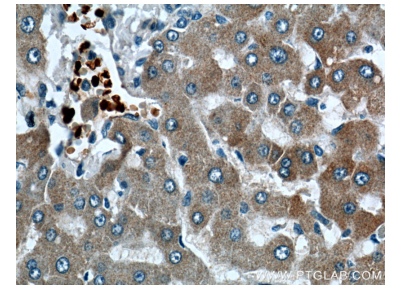
## Selected Validation Data



Various lysates were subjected to SDS PAGE followed by western blot with 21721-1-AP (CYP2A6 antibody) at dilution of 1:5000 incubated at room temperature for 1.5 hours.



Immunohistochemical analysis of paraffin-embedded human liver tissue slide using 21721-1-AP (CYP2A6 Antibody) at dilution of 1:200 (under 10x lens).



Immunohistochemical analysis of paraffin-embedded human liver tissue slide using 21721-1-AP (CYP2A6 Antibody) at dilution of 1:200 (under 40x lens).