

TTF1; NKX2-1 Polyclonal antibody

Catalog Number: 21777-1-AP

1 Publications

Basic Information

Catalog Number:

21777-1-AP

Size:

450 µg/ml

Source:

Rabbit

Isotype:

IgG

GenBank Accession Number:

NM_003317

GeneID (NCBI):

7080

UNIPROT ID:

P43699

Full Name:

NK2 homeobox 1

Calculated MW:

42 kDa

Observed MW:

41-45 kDa

Purification Method:

Antigen affinity purification

Recommended Dilutions:

WB 1:500-1:2000

Applications

Tested Applications:

WB, ELISA

Cited Applications:

WB

Species Specificity:

human, mouse, rat

Cited Species:

human

Positive Controls:

WB : HeLa cells, mouse lung tissue, rat brain tissue, A549 cells, mouse brain tissue

Background Information

NKX2-1, also named as NKX2A, TITF1 and TTF1, belongs to the NK-2 homeobox family. It is a transcription factor that binds and activates the promoter of thyroid specific genes such as thyroglobulin, thyroperoxidase, and thyrotropin receptor. NKX2-1 is crucial in the maintenance of the thyroid differentiation phenotype. It may play a role in lung development and surfactant homeostasis. Defects in NKX2-1 are the cause of benign hereditary chorea (BHC), choreoathetosis, hypothyroidism, and neonatal respiratory distress (CHNRD). The antibody is specific to NKX2-1.

Notable Publications

Author	Pubmed ID	Journal	Application
Qi Xu	36341965	Environ Toxicol Pharmacol	WB

Storage

Storage:

Store at -20°C. Stable for one year after shipment.

Storage Buffer:

PBS with 0.02% sodium azide and 50% glycerol pH 7.3.

Aliquoting is unnecessary for -20°C storage

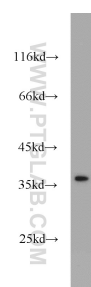
For technical support and original validation data for this product please contact:

T: 4006900926

E: Proteintech-CN@ptglab.comW: ptgcn.com

This product is exclusively available under Proteintech Group brand and is not available to purchase from any other manufacturer.

Selected Validation Data



HeLa cells were subjected to SDS PAGE followed by western blot with 21777-1-AP (NIKX2-1 antibody) at dilution of 1:1000 incubated at room temperature for 1.5 hours.