

For Research Use Only

# CCHCR1 Polyclonal antibody

Catalog Number: 21869-1-AP



## Basic Information

<b>Catalog Number:</b> 21869-1-AP	<b>GenBank Accession Number:</b> BC110534	<b>Purification Method:</b> Antigen affinity purification
<b>Size:</b> 500 µg/ml	<b>GeneID (NCBI):</b> 54535	<b>Recommended Dilutions:</b> IHC 1:50-1:500 IF/ICC 1:20-1:200
<b>Source:</b> Rabbit	<b>UNIPROT ID:</b> Q8TD31	
<b>Isotype:</b> IgG	<b>Full Name:</b> coiled-coil alpha-helical rod protein 1	
<b>Immunogen Catalog Number:</b> AG16141	<b>Calculated MW:</b> 871 aa, 99 kDa	
	<b>Observed MW:</b> 85 kDa	

## Applications

<b>Tested Applications:</b> IHC, IF/ICC, ELISA	<b>Positive Controls:</b> IHC : human colon tissue, IF/ICC : HEK-293 cells,
<b>Species Specificity:</b> human	
<b>Note-IHC: suggested antigen retrieval with TE buffer pH 9.0; (*) Alternatively, antigen retrieval may be performed with citrate buffer pH 6.0</b>	

## Background Information

CCHCR1, also named as C6orf18 or Putative gene 8 protein, is a 782 amino acid protein, which is a nuclear protein abundantly expressed in heart, liver, skeletal muscle, kidney and pancreas, and to a lesser extent in lung and placenta. HCR is overexpressed in keratinocytes of psoriatic lesions. HCR is associated with susceptibility to psoriasis, a chronic inflammatory dermatosis that affects approximately 2% of the population. CCHCR1 may be a regulator of keratinocyte proliferation or differentiation.

## Storage

**Storage:**  
Store at -20°C. Stable for one year after shipment.  
**Storage Buffer:**  
PBS with 0.02% sodium azide and 50% glycerol pH 7.3.  
Aliquoting is unnecessary for -20°C storage

For technical support and original validation data for this product please contact:

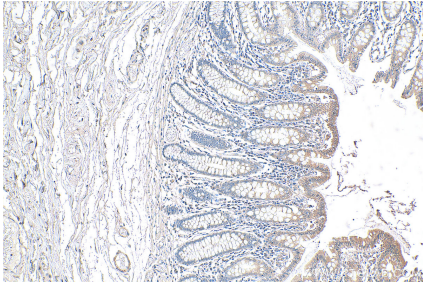
T: 4006900926

E: [Proteintech-CN@ptglab.com](mailto:Proteintech-CN@ptglab.com)

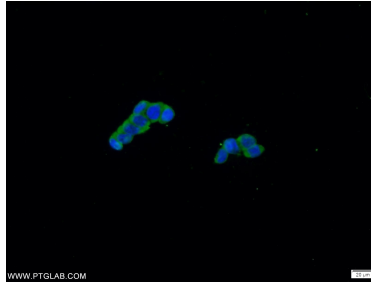
W: [ptgcn.com](http://ptgcn.com)

This product is exclusively available under Proteintech Group brand and is not available to purchase from any other manufacturer.

## Selected Validation Data



Immunohistochemical analysis of paraffin-embedded human colon tissue slide using 21869-1-AP (CCHCR1 antibody) at dilution of 1:200 (under 10x lens). Heat mediated antigen retrieval with Tris-EDTA buffer (pH 9.0).



Immunofluorescent analysis of HEK-293 cells using 21869-1-AP (CCHCR1 antibody) at dilution of 1:50 and Alexa Fluor 488-conjugated AffiniPure Goat Anti-Rabbit IgG(H+L).