

For Research Use Only

TGF Beta 1 Polyclonal antibody

Catalog Number: 21898-1-AP

Featured Product

544 Publications



Basic Information

Catalog Number:

21898-1-AP

Size:

600 µg/ml

Source:

Rabbit

Isotype:

IgG

Immunogen Catalog Number:

AG13591

GenBank Accession Number:

BC000125

GeneID (NCBI):

7040

UNIPROT ID:

P01137

Full Name:

transforming growth factor, beta 1

Calculated MW:

44 kDa

Observed MW:

44 kDa

Purification Method:

Antigen affinity purification

Recommended Dilutions:

WB 1:1000-1:5000

IP 0.5-4.0 µg for 1.0-3.0 mg of total protein lysate

IF 1:200-1:800

Applications

Tested Applications:

FC, IF/ICC, IP, WB, ELISA

Cited Applications:

WB, IP, IF, IHC, CoIP, ELISA, Cell treatment

Species Specificity:

human, mouse, rat

Cited Species:

human, rabbit, zebrafish, pig, canine

Positive Controls:

WB : mouse skin tissue, K-562 cells, HeLa cells, A549 cells, rat skin tissue

IP : mouse skin tissue,

IF : HEK-293 cells,

Background Information

TGFB, also named as LAP and TGFB1, is a multifunctional peptide that controls proliferation, differentiation, and other functions in many cell types. TGFB acts synergistically with TGFA in inducing transformation. It also acts as a negative autocrine growth factor. Dysregulation of TGFB activation and signaling may result in apoptosis. Many cells synthesize TGFB and almost all of them have specific receptors for it. TGFB positively and negatively regulates many other growth factors. It plays an important role in bone remodeling as it is a potent stimulator of osteoblastic bone formation, causing chemotaxis, proliferation and differentiation in committed osteoblasts. It is highly expressed in bone. Mutation of TGFB are the cause of Camurati-Engelmann disease (CED) which known as progressive diaphyseal dysplasia 1 (DPD1).

This antibody detects the pro-TGF beta 1 and the cleaved fragment Latency-associated peptide.

Notable Publications

Author	Pubmed ID	Journal	Application
Jin-Yun Pu	36178578	Curr Med Sci	WB
Pengfei Wu	32999004	Cancer Immunol Res	IHC
Xinmei Huang	34478541	J Clin Endocrinol Metab	IHC

Storage

Storage:

Store at -20°C. Stable for one year after shipment.

Storage Buffer:

PBS with 0.02% sodium azide and 50% glycerol pH 7.3.

Aliquoting is unnecessary for -20°C storage

For technical support and original validation data for this product please contact:

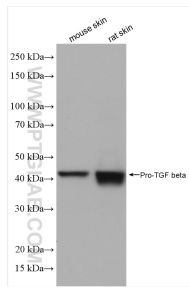
T: 4006900926

E: Proteintech-CN@ptglab.com

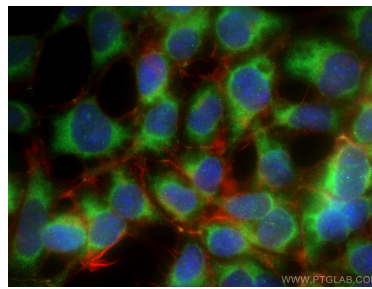
W: ptgcn.com

This product is exclusively available under Proteintech Group brand and is not available to purchase from any other manufacturer.

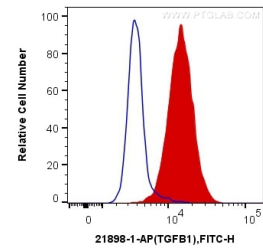
Selected Validation Data



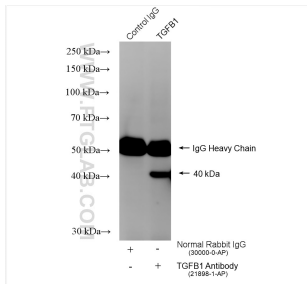
Various lysates were subjected to SDS PAGE followed by western blot with 21898-1-AP (TGF-beta 1 antibody) at dilution of 1:2500 incubated at room temperature for 1.5 hours.



Immunofluorescent analysis of (-20°C Ethanol) fixed HEK-293 cells using TGF Beta 1 antibody (21898-1-AP) at dilution of 1:400 and CoraLite@488-Conjugated AffiniPure Goat Anti-Rabbit IgG(H+L), CL594-Phalloidin (red).



1X10⁶ HEK-293 cells were intracellularly stained with 0.25 ug Anti-Human TGF Beta 1 (21898-1-AP) and CoraLite@488-Conjugated AffiniPure Goat Anti-Rabbit IgG(H+L) at dilution 1:1000 (red), or 0.25 ug Control Antibody. Cells were fixed with 4% PFA and permeabilized with Flow Cytometry Perm Buffer (PF00011-C).



IP result of anti-TGF Beta 1 (IP:21898-1-AP, 4ug; Detection:21898-1-AP 1:6000) with mouse skin tissue lysate 640 ug.