

For Research Use Only

LGI3 Polyclonal antibody

Catalog Number: 21919-1-AP **1 Publications**



Basic Information

Catalog Number: 21919-1-AP	GenBank Accession Number: BC142997	Purification Method: Antigen affinity purification
Size: 650 µg/ml	GeneID (NCBI): 203190	Recommended Dilutions: WB 1:500-1:2000 IHC 1:20-1:200 IF/ICC 1:20-1:200
Source: Rabbit	UNIPROT ID: Q8N145	
Isotype: IgG	Full Name: leucine-rich repeat LGI family, member 3	
Immunogen Catalog Number: AG16257	Calculated MW: 548 aa, 62 kDa	
	Observed MW: 55-62 kDa	

Applications

Tested Applications: WB, IHC, IF/ICC, ELISA	Positive Controls: WB : HepG2 cells, mouse lung tissue, A549 cells, mouse liver tissue, SMMC-7721 cells
Cited Applications: IF	IHC : human lung tissue, human brain tissue
Species Specificity: human, mouse, rat	IF/ICC : HepG2 cells,
Cited Species: mouse	

Note-IHC: suggested antigen retrieval with TE buffer pH 9.0; (*) Alternatively, antigen retrieval may be performed with citrate buffer pH 6.0

Background Information

Notable Publications

Author	Pubmed ID	Journal	Application
Dana Marafi	35948005	Am J Hum Genet	IF

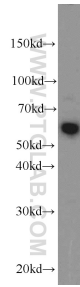
Storage

Storage:
Store at -20°C. Stable for one year after shipment.
Storage Buffer:
PBS with 0.02% sodium azide and 50% glycerol pH 7.3.
Aliquoting is unnecessary for -20°C storage

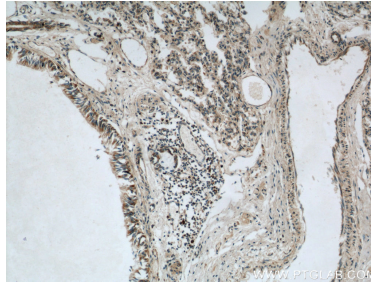
For technical support and original validation data for this product please contact:
T: 4006900926 E: Proteintech-CN@ptglab.com W: ptgcn.com

This product is exclusively available under Proteintech Group brand and is not available to purchase from any other manufacturer.

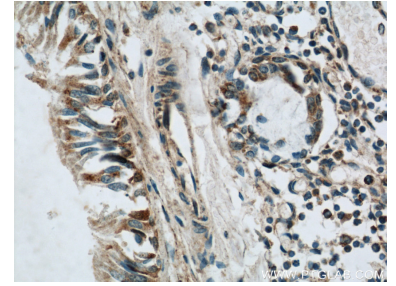
Selected Validation Data



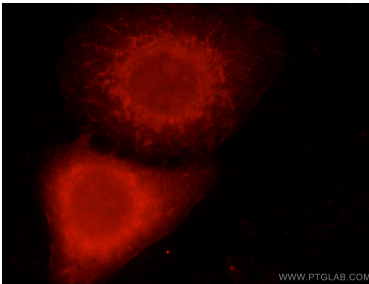
HepG2 cells were subjected to SDS PAGE followed by western blot with 21919-1-AP (LGI3 antibody) at dilution of 1:1000 incubated at room temperature for 1.5 hours.



Immunohistochemical analysis of paraffin-embedded human lung using 21919-1-AP (LGI3 antibody) at dilution of 1:50 (under 10x lens).



Immunohistochemical analysis of paraffin-embedded human lung using 21919-1-AP (LGI3 antibody) at dilution of 1:50 (under 40x lens).



Immunofluorescent analysis of HepG2 cells using 21919-1-AP (LGI3 Antibody) at dilution of 1:50 and Rhodamine-labeled goat anti-Rabbit IgG (red).