

For Research Use Only

# TLE3 Polyclonal antibody, PBS Only

Catalog Number: 22094-1-PBS

Featured Product



## Basic Information

**Catalog Number:**

22094-1-PBS

**Size:**

1 mg/ml

**Source:**

Rabbit

**Isotype:**

IgG

**Immunogen Catalog Number:**

AG17300

**GenBank Accession Number:**

BC015729

**GeneID (NCBI):**

7090

**UNIPROT ID:**

Q04726

**Full Name:**

transducin-like enhancer of split 3  
(E(sp1) homolog, Drosophila)

**Calculated MW:**

772 aa, 83 kDa

**Observed MW:**

90 kDa

**Purification Method:**

Antigen affinity purification

## Applications

**Tested Applications:**

WB, IHC, IF/ICC, IP, Indirect ELISA

**Species Specificity:**

human, mouse, rat

## Background Information

Transducin-like enhancer of split 3 (TLE3) is a corepressor that binds to a variant of transcription factor, which mediated by CTNNB1 and TCF family members in Wnt signaling. It's suggested that effect of full-length TLE family members be regulated by association with dominant-negative AES.

## Storage

**Storage:**

Store at -80°C.

The product is shipped with ice packs. Upon receipt, store it immediately at -80°C

**Storage Buffer:**

PBS Only

For technical support and original validation data for this product please contact:

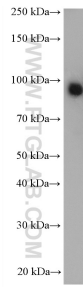
T: 4006900926

E: [Proteintech-CN@ptglab.com](mailto:Proteintech-CN@ptglab.com)

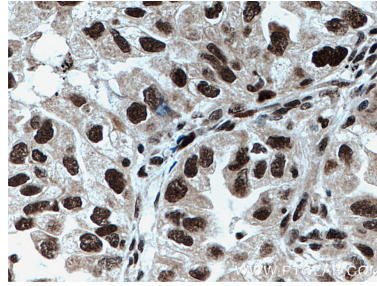
W: [ptgcn.com](http://ptgcn.com)

This product is exclusively available under Proteintech Group brand and is not available to purchase from any other manufacturer.

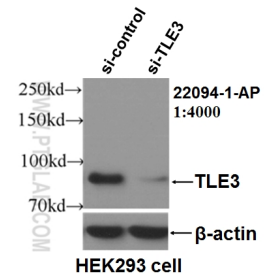
## Selected Validation Data



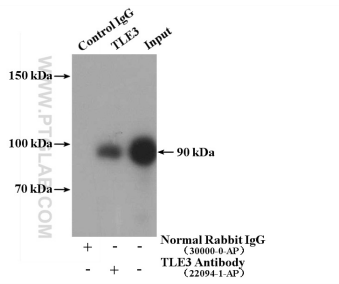
HEK-293 cells were subjected to SDS PAGE followed by western blot with 22094-1-AP (TLE3 antibody) at dilution of 1:2000 incubated at room temperature for 1.5 hours. This data was developed using the same antibody clone with 22094-1-PBS in a different storage buffer formulation.



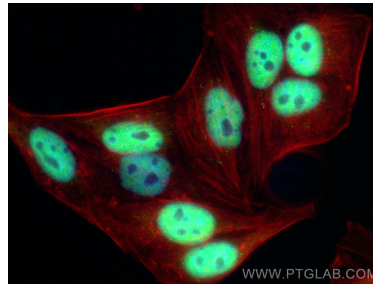
Immunohistochemical analysis of paraffin-embedded human lung cancer tissue slide using 22094-1-AP (TLE3 antibody) at dilution of 1:200 (under 40x lens. Heat mediated antigen retrieval with Tris-EDTA buffer (pH 9.0)). This data was developed using the same antibody clone with 22094-1-PBS in a different storage buffer formulation.



WB result of TLE3 antibody (22094-1-AP, 1:4000) with si-Control and si-TLE3 transfected HEK293 cells. This data was developed using the same antibody clone with 22094-1-PBS in a different storage buffer formulation.



IP result of anti-TLE3 (IP:22094-1-AP, 4ug; Detection:22094-1-AP 1:1000) with HepG2 cells lysate 2400ug. This data was developed using the same antibody clone with 22094-1-PBS in a different storage buffer formulation.



Immunofluorescent analysis of (4% PFA) fixed HepG2 cells using TLE3 antibody (22094-1-AP) at dilution of 1:600 and CoraLite@488-Conjugated AffiniPure Goat Anti-Rabbit IgG(H+L) (SA00013-2), CL594-Phalloidin (red). This data was developed using the same antibody clone with 22094-1-PBS in a different storage buffer formulation.