

For Research Use Only

Ubiquilin 1 Polyclonal antibody

Catalog Number:22126-1-AP



Basic Information

Catalog Number:

22126-1-AP

Size:

200 ug/ml

Source:

Rabbit

Isotype:

IgG

Immunogen Catalog Number:

AG17530

GenBank Accession Number:

BC010066

GeneID (NCBI):

29979

UNIPROT ID:

Q9UMX0

Full Name:

ubiquilin 1

Calculated MW:

589 aa, 63 kDa

Observed MW:

63-71 kDa

Purification Method:

Antigen affinity purification

Recommended Dilutions:

WB 1:1000-1:4000

IF/ICC 1:200-1:800

Applications

Tested Applications:

WB, IF/ICC, ELISA

Species Specificity:

human, mouse, rat

Positive Controls:

WB : T-47D cells, Transfected HEK-293 cells, mouse brain tissue, rat brain tissue

IF/ICC : HeLa cells,

Background Information

UBQLN1, also known as DSK2 or Ubiquilin 1, is an ubiquitin-like protein. It contains a N-terminal ubiquitin-like domain and a C-terminal ubiquitin-associated domain. They physically associate with both proteasomes and ubiquitin ligases, and thus are thought to functionally link the ubiquitination machinery to the proteasome to affect in vivo protein degradation. Ubiquilin has also been shown to modulate accumulation of presenilin proteins, and is found in lesions associated with Alzheimer's and Parkinson's disease. Two transcript variants encoding different isoforms have been found for this gene. Higher levels of ubiquilin-1 in the brain decreased malformation of the APP molecule which plays a key role in triggering Alzheimer's disease. Conversely, lower levels of ubiquilin-1 in the brain were associated with increased malformation of APP (PMID: 21852239). This antibody detects 70kD band of UBQLN1.

Storage

Storage:

Store at -20°C. Stable for one year after shipment.

Storage Buffer:

PBS with 0.02% sodium azide and 50% glycerol pH 7.3.

Aliquoting is unnecessary for -20°C storage

For technical support and original validation data for this product please contact:

T: 4006900926

E: Proteintech-CN@ptglab.com

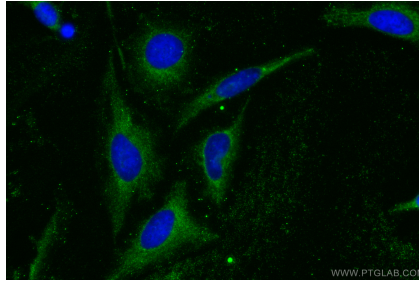
W: ptgcn.com

This product is exclusively available under Proteintech Group brand and is not available to purchase from any other manufacturer.

Selected Validation Data



Various lysates were subjected to SDS PAGE followed by western blot with 22126-1-AP (Ubiquilin 1 antibody) at dilution of 1:2000 incubated at room temperature for 1.5 hours.



Immunofluorescent analysis of (-20°C Methanol) fixed HeLa cells using Ubiquilin 1 antibody (22126-1-AP) at dilution of 1:400 and CoraLite® 488-Conjugated AffiniPure Goat Anti-Rabbit IgG(H+L).