

For Research Use Only

# Ubiquilin 1 Polyclonal antibody, PBS Only

Catalog Number: 22126-1-PBS



## Basic Information

<b>Catalog Number:</b> 22126-1-PBS	<b>GenBank Accession Number:</b> BC010066	<b>Purification Method:</b> Antigen affinity purification
<b>Size:</b> 1 mg/ml	<b>GeneID (NCBI):</b> 29979	
<b>Source:</b> Rabbit	<b>UNIPROT ID:</b> Q9UMX0	
<b>Isotype:</b> IgG	<b>Full Name:</b> ubiquilin 1	
<b>Immunogen Catalog Number:</b> AG17530	<b>Calculated MW:</b> 589 aa, 63 kDa	
	<b>Observed MW:</b> 63-71 kDa	

## Applications

**Tested Applications:**  
WB, IF/ICC, Indirect ELISA

**Species Specificity:**  
human, mouse, rat

## Background Information

UBQLN1, also known as DSK2 or Ubiquilin 1, is an ubiquitin-like protein that contains a N-terminal ubiquitin-like domain and a C-terminal ubiquitin-associated domain. They physically associate with both proteasomes and ubiquitin ligases, and thus are thought to functionally link the ubiquitination machinery to the proteasome to affect in vivo protein degradation. Ubiquilin has also been shown to modulate accumulation of presenilin proteins, and is found in lesions associated with Alzheimer's and Parkinson's disease. Two transcript variants encoding different isoforms have been found for this gene. Higher levels of ubiquilin-1 in the brain decreased malformation of the APP molecule which plays a key role in triggering Alzheimer's disease. Conversely, lower levels of ubiquilin-1 in the brain were associated with increased malformation of APP (PMID: 21852239). This antibody detects 70kD band of UBQLN1.

## Storage

**Storage:**  
Store at -80°C.  
**The product is shipped with ice packs. Upon receipt, store it immediately at -80°C**

**Storage Buffer:**  
PBS Only

For technical support and original validation data for this product please contact:

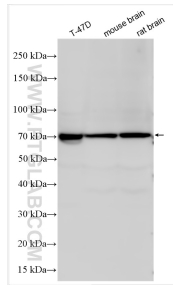
T: 4006900926

E: [Proteintech-CN@ptglab.com](mailto:Proteintech-CN@ptglab.com)

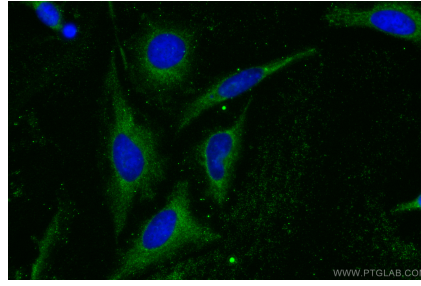
W: [ptgcn.com](http://ptgcn.com)

**This product is exclusively available under Proteintech Group brand and is not available to purchase from any other manufacturer.**

## Selected Validation Data



Various lysates were subjected to SDS PAGE followed by western blot with 22126-1-AP (Ubiquilin 1 antibody) at dilution of 1:2000 incubated at room temperature for 1.5 hours. This data was developed using the same antibody clone with 22126-1-PBS in a different storage buffer formulation.



Immunofluorescent analysis of (-20°C Methanol) fixed HeLa cells using Ubiquilin 1 antibody (22126-1-AP) at dilution of 1:400 and CoraLite® 488-Conjugated AffiniPure Goat Anti-Rabbit IgG(H+L). This data was developed using the same antibody clone with 22126-1-PBS in a different storage buffer formulation.