

For Research Use Only

# LY6E Polyclonal antibody

Catalog Number: 22144-1-AP

Featured Product

4 Publications



## Basic Information

Catalog Number:

22144-1-AP

Size:

450 µg/ml

Source:

Rabbit

Isotype:

IgG

Immunogen Catalog Number:

AG17573

GenBank Accession Number:

BC119708

GeneID (NCBI):

4061

UNIPROT ID:

Q16553

Full Name:

lymphocyte antigen 6 complex, locus E

Calculated MW:

131 aa, 14 kDa

Observed MW:

12-16 kDa

Purification Method:

Antigen affinity purification

Recommended Dilutions:

WB 1:200-1:1000

IHC 1:20-1:200

## Applications

Tested Applications:

IHC, WB, ELISA

Cited Applications:

IF, IHC, WB

Species Specificity:

human, Mouse

Cited Species:

human

**Note-IHC: suggested antigen retrieval with TE buffer pH 9.0; (\*) Alternatively, antigen retrieval may be performed with citrate buffer pH 6.0**

Positive Controls:

WB: mouse kidney tissue,

IHC: human tonsillitis tissue, human liver cancer tissue

## Background Information

The predicted MW of LY6E is 13 kDa. Catalog#22144-1-AP recognises two band of 13 kDa and 18 kDa, and the additional 18 kDa band may be due to glycosylation.

## Notable Publications

Author	Pubmed ID	Journal	Application
Dan Liu	36165190	Lab Chip	WB, IF
Xuesen Zhao	32641482	J Virol	WB
Qian Zhang	34994389	Carcinogenesis	WB, IHC

## Storage

Storage:

Store at -20°C. Stable for one year after shipment.

Storage Buffer:

PBS with 0.02% sodium azide and 50% glycerol pH 7.3.

Aliquoting is unnecessary for -20°C storage

For technical support and original validation data for this product please contact:

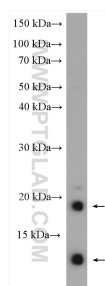
T: 4006900926

E: [Proteintech-CN@ptglab.com](mailto:Proteintech-CN@ptglab.com)

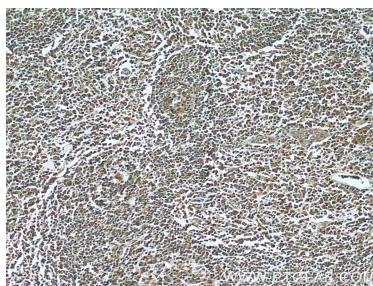
W: [ptgcn.com](http://ptgcn.com)

This product is exclusively available under Proteintech Group brand and is not available to purchase from any other manufacturer.

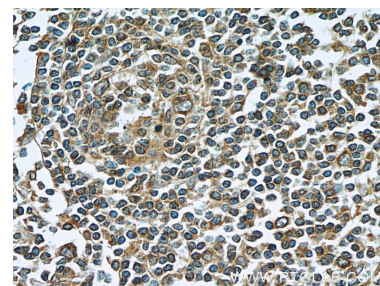
## Selected Validation Data



mouse kidney tissue were subjected to SDS PAGE followed by western blot with 22144-1-AP (LY6E antibody) at dilution of 1:300 incubated at room temperature for 1.5 hours.



Immunohistochemical analysis of paraffin-embedded human tonsillitis tissue slide using 22144-1-AP (LY6E Antibody) at dilution of 1:50 (under 10x lens).



Immunohistochemical analysis of paraffin-embedded human tonsillitis tissue slide using 22144-1-AP (LY6E Antibody) at dilution of 1:50 (under 40x lens).