

For Research Use Only

# CREBBP Polyclonal antibody

Catalog Number: 22277-1-AP



## Basic Information

<b>Catalog Number:</b> 22277-1-AP	<b>GenBank Accession Number:</b> NM_004380	<b>Purification Method:</b> Antigen affinity purification
<b>Size:</b> 230 µg/ml	<b>GeneID (NCBI):</b> 1387	<b>Recommended Dilutions:</b> WB 1:1000-1:4000 IHC 1:150-1:600 IF 1:400-1:1600
<b>Source:</b> Rabbit	<b>UNIPROT ID:</b> Q92793	
<b>Isotype:</b> IgG	<b>Full Name:</b> CREB binding protein	
	<b>Calculated MW:</b> 265 kDa	
	<b>Observed MW:</b> 290 kDa	

## Applications

<b>Tested Applications:</b> IF/ICC, IHC, WB, ELISA	<b>Positive Controls:</b> WB : HeLa cells, Jurkat cells IHC : human prostate cancer tissue, IF : HeLa cells,
<b>Species Specificity:</b> human	
<b>Note-IHC: suggested antigen retrieval with TE buffer pH 9.0; (*) Alternatively, antigen retrieval may be performed with citrate buffer pH 6.0</b>	

## Background Information

The acetyltransferase CREB-binding protein (CREBBP; also known as CBP or KAT2A) and E1A-binding protein P300 (EP300; also known as P300 or KAT2B) are two closely related regulators. Both are widely expressed within and outside the hematopoietic system and serve as tumor activators or suppressors depending on the situation. CREBBP/EP300 regulate various key physiological functions, including cell apoptosis, proliferation and differentiation, DNA repair, and somatic cell reprogramming.

## Storage

**Storage:**  
Store at -20°C. Stable for one year after shipment.  
**Storage Buffer:**  
PBS with 0.02% sodium azide and 50% glycerol pH 7.3.  
Aliquoting is unnecessary for -20°C storage

For technical support and original validation data for this product please contact:

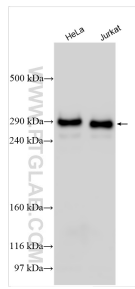
T: 4006900926

E: Proteintech-CN@ptglab.com

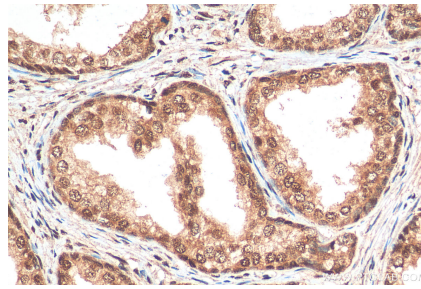
W: ptgcn.com

This product is exclusively available under Proteintech Group brand and is not available to purchase from any other manufacturer.

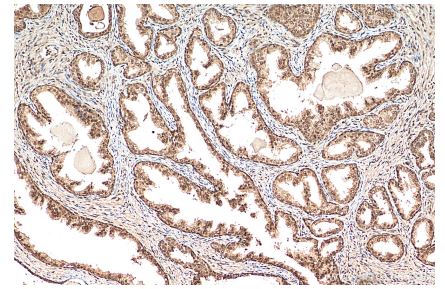
## Selected Validation Data



Various lysates were subjected to SDS PAGE followed by western blot with 22277-1-AP (CREBBP antibody) at dilution of 1:2000 incubated at room temperature for 1.5 hours.



Immunohistochemical analysis of paraffin-embedded human prostate cancer tissue slide using 22277-1-AP (CREBBP antibody) at dilution of 1:300 (under 40x lens). Heat mediated antigen retrieval with Tris-EDTA buffer (pH 9.0).



Immunohistochemical analysis of paraffin-embedded human prostate cancer tissue slide using 22277-1-AP (CREBBP antibody) at dilution of 1:300 (under 10x lens). Heat mediated antigen retrieval with Tris-EDTA buffer (pH 9.0).



Immunofluorescent analysis of (4% PFA) fixed HeLa cells using CREBBP antibody (22277-1-AP) at dilution of 1:800 and CoraLite®488-Conjugated AffiniPure Goat Anti-Rabbit IgG(H+L).