

For Research Use Only

Amylin Polyclonal antibody, PBS Only

Catalog Number: 22305-1-PBS



Basic Information

Catalog Number:

22305-1-PBS

Concentration:

1 mg/ml

Source:

Rabbit

Isotype:

IgG

GenBank Accession Number:

NM_000415

GeneID (NCBI):

3375

UNIPROT ID:

P10997

Full Name:

islet amyloid polypeptide

Calculated MW:

10 kDa

Purification Method:

Antigen Affinity purified

Applications

Tested Applications:

IHC, Indirect ELISA

Species Specificity:

human, mouse, rat

Background Information

IAPP, also known as Amylin, is commonly found in pancreatic islets of patients suffering diabetes mellitus type II, or harboring a tumor of the pancreas that is derived from beta cells and secretes INS. IAPP is co-secreted with INS by pancreatic β -cells and largely contributes to glycemic control. Studies suggest that this protein, like the related beta-amyloid (A β) associated with Alzheimer's disease, can induce apoptotic cell-death in particular cultured cells, an effect that may be relevant to the development of type II diabetes.

Storage

Storage:

Store at -80°C.

The product is shipped with ice packs. Upon receipt, store it immediately at -80°C

Storage Buffer:

PBS only, pH7.3

For technical support and original validation data for this product please contact:

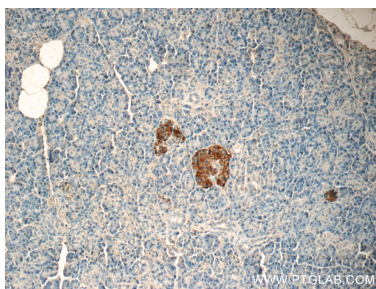
T: 4006900926

E: Proteintech-CN@ptglab.com

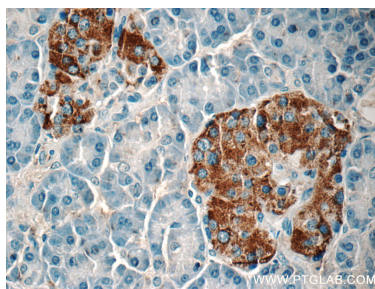
W: ptgcn.com

This product is exclusively available under Proteintech Group brand and is not available to purchase from any other manufacturer.

Selected Validation Data



Immunohistochemical analysis of paraffin-embedded human pancreas tissue slide using 22305-1-AP (Amylin Antibody) at dilution of 1:50 (under 10x lens). This data was developed using the same antibody clone with 22305-1-PBS in a different storage buffer formulation.



Immunohistochemical analysis of paraffin-embedded human pancreas tissue slide using 22305-1-AP (Amylin Antibody) at dilution of 1:50 (under 40x lens). This data was developed using the same antibody clone with 22305-1-PBS in a different storage buffer formulation.