

For Research Use Only

GYS2 Polyclonal antibody

Catalog Number: 22371-1-AP **14 Publications**



Basic Information

Catalog Number: 22371-1-AP	GenBank Accession Number: BC126310	Purification Method: Antigen affinity purification
Size: 900 µg/ml	GeneID (NCBI): 2998	Recommended Dilutions: WB 1:2000-1:16000
Source: Rabbit	UNIPROT ID: P54840	IP 0.5-4.0 µg for 1.0-3.0 mg of total protein lysate
Isotype: IgG	Full Name: glycogen synthase 2 (liver)	IHC 1:50-1:500
Immunogen Catalog Number: AG18012	Calculated MW: 703 aa, 81 kDa	
	Observed MW: 81 kDa	

Applications

Tested Applications: IHC, IP, WB, ELISA	Positive Controls:
Cited Applications: WB, IHC	WB : mouse liver tissue, mouse kidney tissue, rat liver tissue
Species Specificity: human, mouse, rat	IP : rat liver tissue,
Cited Species: human, rat, mouse	IHC : human liver tissue,
Note-IHC: suggested antigen retrieval with TE buffer pH 9.0; (*) Alternatively, antigen retrieval may be performed with citrate buffer pH 6.0	

Background Information

Notable Publications

Author	Pubmed ID	Journal	Application
Zejian Liu	36063868	Metabolism	WB
Omer Keinan	34707293	Nature	WB
Xiang Zhang	36396934	Nat Commun	WB, IHC

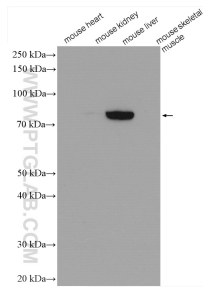
Storage

Storage:
Store at -20°C. Stable for one year after shipment.
Storage Buffer:
PBS with 0.02% sodium azide and 50% glycerol pH 7.3.
Aliquoting is unnecessary for -20°C storage

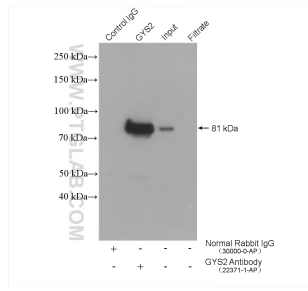
For technical support and original validation data for this product please contact:
T: 4006900926 E: Proteintech-CN@ptglab.com W: ptgcn.com

This product is exclusively available under Proteintech Group brand and is not available to purchase from any other manufacturer.

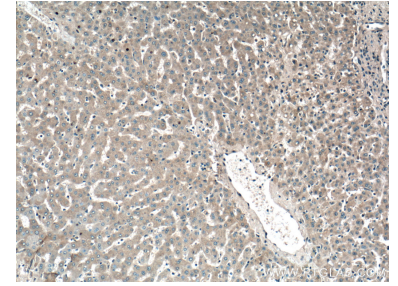
Selected Validation Data



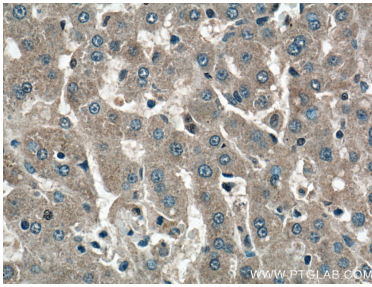
Various lysates were subjected to SDS PAGE followed by western blot with 22371-1-AP (GYS2 antibody) at dilution of 1:8000 incubated at room temperature for 1.5 hours. Mouse heart/ kidney/ skeletal muscle are negative control.



IP result of anti-GYS2 (IP:22371-1-AP, 4ug; Detection:22371-1-AP 1:1000) with rat liver tissue lysate 4000 ug.



Immunohistochemical analysis of paraffin-embedded human liver tissue slide using 22371-1-AP (GYS2 antibody) at dilution of 1:200 (under 10x lens).



Immunohistochemical analysis of paraffin-embedded human liver tissue slide using 22371-1-AP (GYS2 antibody) at dilution of 1:200 (under 40x lens).