

For Research Use Only

# TMEM168 Polyclonal antibody

Catalog Number: 22527-1-AP **3 Publications**



## Basic Information

<b>Catalog Number:</b> 22527-1-AP	<b>GenBank Accession Number:</b> BC030804	<b>Purification Method:</b> Antigen Affinity purified
<b>Size:</b> 1000 µg/ml	<b>GeneID (NCBI):</b> 64418	<b>Recommended Dilutions:</b> WB 1:1000-1:4000 IHC 1:20-1:200
<b>Source:</b> Rabbit	<b>UNIPROT ID:</b> Q9HOV1	
<b>Isotype:</b> IgG	<b>Full Name:</b> transmembrane protein 168	
<b>Immunogen Catalog Number:</b> AG18337	<b>Calculated MW:</b> 697 aa, 80 kDa	
	<b>Observed MW:</b> 110-130 kDa	

## Applications

<b>Tested Applications:</b> IHC, WB, ELISA	<b>Positive Controls:</b> WB : mouse brain tissue, PC-3 cells, rat brain tissue IHC : human testis tissue,
<b>Cited Applications:</b> WB, IP, IF	
<b>Species Specificity:</b> human, mouse, rat	
<b>Cited Species:</b> human	
<b>Note-IHC: suggested antigen retrieval with TE buffer pH 9.0; (*) Alternatively, antigen retrieval may be performed with citrate buffer pH 6.0</b>	

## Background Information

### Notable Publications

Author	Pubmed ID	Journal	Application
Jie Xu	30940290	Oncol Res	
Akio Shimizu	32175648	FASEB J	WB,IF
Le Kim Chi Nguyen	34086898	J Biochem	IP, WB

## Storage

**Storage:**  
Store at -20°C. Stable for one year after shipment.  
**Storage Buffer:**  
PBS with 0.02% sodium azide and 50% glycerol pH 7.3.  
Aliquoting is unnecessary for -20°C storage

For technical support and original validation data for this product please contact:

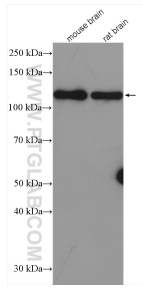
T: 4006900926

E: [Proteintech-CN@ptglab.com](mailto:Proteintech-CN@ptglab.com)

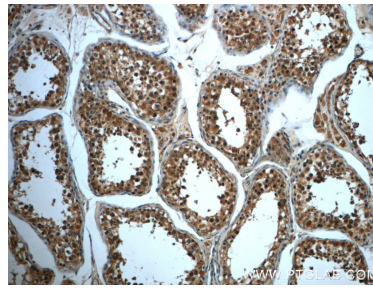
W: [ptgcn.com](http://ptgcn.com)

**This product is exclusively available under Proteintech Group brand and is not available to purchase from any other manufacturer.**

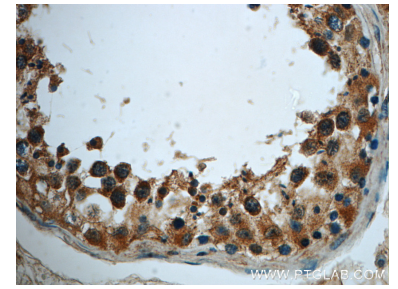
## Selected Validation Data



Various lysates were subjected to SDS PAGE followed by western blot with 22527-1-AP (TMEM168 antibody) at dilution of 1:2000 incubated at room temperature for 1.5 hours.



Immunohistochemical analysis of paraffin-embedded human testis slide using 22527-1-AP (TMEM168 Antibody) at dilution of 1:50.



Immunohistochemical analysis of paraffin-embedded human testis slide using 22527-1-AP (TMEM168 Antibody) at dilution of 1:50.