

For Research Use Only

# WDR61 Polyclonal antibody

Catalog Number: 22536-1-AP

6 Publications



## Basic Information

**Catalog Number:**

22536-1-AP

**Size:**

450 ug/ml

**Source:**

Rabbit

**Isotype:**

IgG

**Immunogen Catalog Number:**

AG18443

**GenBank Accession Number:**

BC010080

**GeneID (NCBI):**

80349

**UNIPROT ID:**

Q9GZS3

**Full Name:**

WD repeat domain 61

**Calculated MW:**

305 aa, 34 kDa

**Observed MW:**

33 kDa

**Purification Method:**

Antigen affinity purification

**Recommended Dilutions:**

WB 1:500-1:3000

IP 0.5-4.0 ug for 1.0-3.0 mg of total protein lysate

IHC 1:50-1:500

IF/ICC 1:50-1:500

## Applications

**Tested Applications:**

WB, IHC, IF/ICC, IP, ELISA

**Cited Applications:**

WB, IP

**Species Specificity:**

human, mouse, rat

**Cited Species:**

human, mouse

**Note-IHC: suggested antigen retrieval with TE buffer pH 9.0; (\*) Alternatively, antigen retrieval may be performed with citrate buffer pH 6.0**

**Positive Controls:**

WB : HeLa cells, mouse liver tissue, HepG2 cells

IP : mouse brain tissue,

IHC : mouse testis tissue, human breast cancer tissue

IF/ICC : HeLa cells,

## Background Information

Component of the PAF1 complex (PAF1C) which has multiple functions during transcription by RNA polymerase II and is implicated in regulation of development and maintenance of embryonic stem cell pluripotency (refer to UniProt). Catalog#22536-1-AP is a rabbit polyclonal antibody raised against the full-length of human WDR61. The MW of this protein is 33 kDa, and this antibody specially recognises the 33 kDa protein.

## Notable Publications

Author	Pubmed ID	Journal	Application
Gang Xiang	35551175	Cell Death Dis	WB
Robinson Triboulet	39235218	Mol Cancer Ther	WB
Yayan Hou	38708718	FEBS J	WB

## Storage

**Storage:**

Store at -20°C. Stable for one year after shipment.

**Storage Buffer:**

PBS with 0.02% sodium azide and 50% glycerol pH 7.3.

Aliquoting is unnecessary for -20°C storage

For technical support and original validation data for this product please contact:

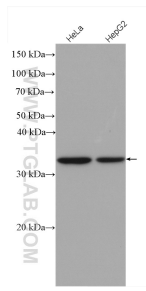
T: 4006900926

E: [Proteintech-CN@ptglab.com](mailto:Proteintech-CN@ptglab.com)

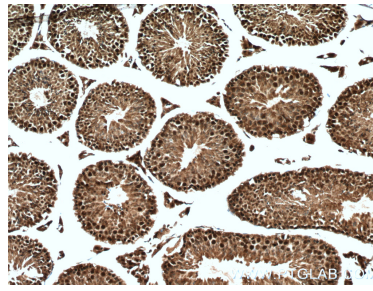
W: [ptgcn.com](http://ptgcn.com)

**This product is exclusively available under Proteintech Group brand and is not available to purchase from any other manufacturer.**

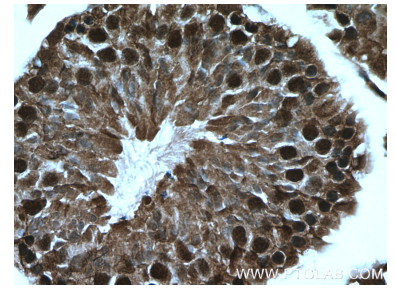
## Selected Validation Data



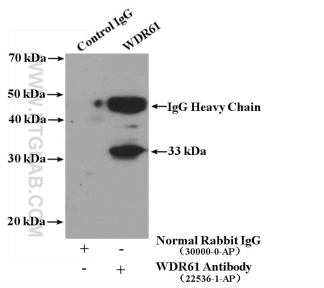
Various lysates were subjected to SDS PAGE followed by western blot with 22536-1-AP (WDR61 antibody) at dilution of 1:1500 incubated at room temperature for 1.5 hours.



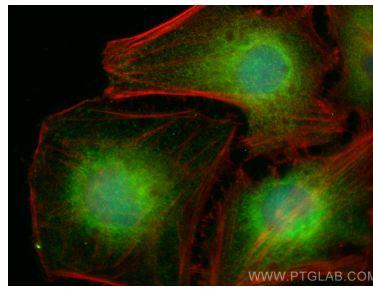
Immunohistochemical analysis of paraffin-embedded mouse testis tissue slide using 22536-1-AP (WDR61 antibody) at dilution of 1:200 (under 10x lens). Heat mediated antigen retrieval with Tris-EDTA buffer (pH 9.0).



Immunohistochemical analysis of paraffin-embedded mouse testis tissue slide using 22536-1-AP (WDR61 antibody) at dilution of 1:200 (under 40x lens). Heat mediated antigen retrieval with Tris-EDTA buffer (pH 9.0).



IP result of anti-WDR61 (IP:22536-1-AP, 4ug; Detection:22536-1-AP 1:1000) with mouse brain tissue lysate 4000ug.



Immunofluorescent analysis of (4% PFA) fixed HeLa cells using WDR61 antibody (22536-1-AP) at dilution of 1:200 and CoraLite@488-Conjugated AffiniPure Goat Anti-Rabbit IgG(H+L) (SA00013-2), CL594-phalloidin (red).