

For Research Use Only

BCR Polyclonal antibody, PBS Only

Catalog Number: 22585-1-PBS

Featured Product



Basic Information

Catalog Number:

22585-1-PBS

Size:

1 mg/ml

Source:

Rabbit

Isotype:

IgG

Immunogen Catalog Number:

AG18281

GenBank Accession Number:

BC066122

GeneID (NCBI):

613

UNIPROT ID:

P11274

Full Name:

breakpoint cluster region

Calculated MW:

143 kDa

Observed MW:

150-160 kDa

Purification Method:

Antigen Affinity purified

Applications

Tested Applications:

WB, IHC, IF/ICC, IP, Indirect ELISA

Species Specificity:

human, monkey

Background Information

The Bcr gene, mapping on chromosome 22, was originally identified by its presence in the chimeric Bcr-Abl oncogene. The Bcr gene encodes for the break point cluster region protein (Bcr). Although the BCR-ABL fusion protein has been extensively studied, the function of the normal BCR gene product is not clear. The protein has serine/threonine kinase activity and is a GTPase-activating protein for RAC1 and CDC42. A chromosomal aberration involving BCR has been found in patients with chronic myeloid leukemia.

Storage

Storage:

Store at -80°C.

The product is shipped with ice packs. Upon receipt, store it immediately at -80°C

Storage Buffer:

PBS Only

For technical support and original validation data for this product please contact:

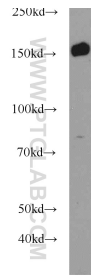
T: 4006900926

E: Proteintech-CN@ptglab.com

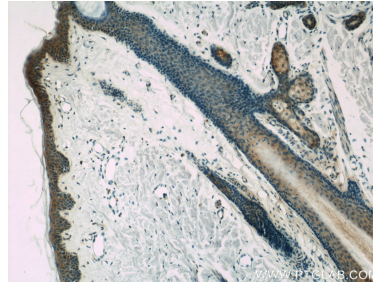
W: ptgcn.com

This product is exclusively available under Proteintech Group brand and is not available to purchase from any other manufacturer.

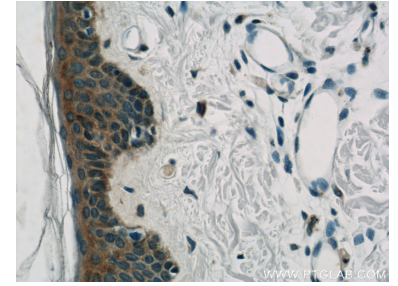
Selected Validation Data



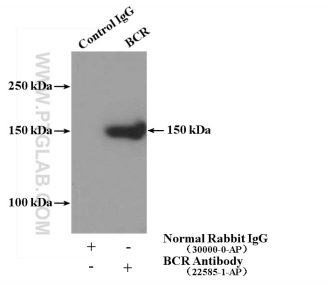
Y79 cells were subjected to SDS PAGE followed by western blot with 22585-1-AP (BCR antibody) at dilution of 1:1000 incubated at room temperature for 1.5 hours. This data was developed using the same antibody clone with 22585-1-PBS in a different storage buffer formulation.



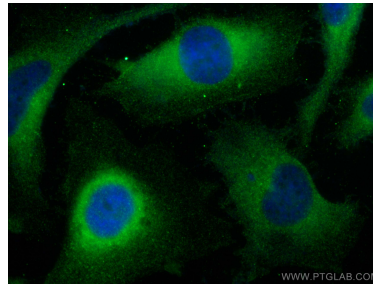
Immunohistochemical analysis of paraffin-embedded human skin slide using 22585-1-AP (BCR Antibody) at dilution of 1:50. This data was developed using the same antibody clone with 22585-1-PBS in a different storage buffer formulation.



Immunohistochemical analysis of paraffin-embedded human skin slide using 22585-1-AP (BCR Antibody) at dilution of 1:50. This data was developed using the same antibody clone with 22585-1-PBS in a different storage buffer formulation.



IP result of anti-BCR (IP:22585-1-AP, 4ug; Detection:22585-1-AP 1:1000) with HEK-293 cells lysate 3000ug. This data was developed using the same antibody clone with 22585-1-PBS in a different storage buffer formulation.



Immunofluorescent analysis of (-20°C Methanol) fixed HeLa cells using BCR antibody (22585-1-AP) at dilution of 1:400 and CoraLite®488-Conjugated AffiniPure Goat Anti-Rabbit IgG(H+L) (SA00013-2). This data was developed using the same antibody clone with 22585-1-PBS in a different storage buffer formulation.