

For Research Use Only

PPP4R2 Polyclonal antibody

Catalog Number: 22676-1-AP **1 Publications**



Basic Information

Catalog Number:

22676-1-AP

Size:

500 µg/ml

Source:

Rabbit

Isotype:

IgG

Immunogen Catalog Number:

AG18486

GenBank Accession Number:

BC110889

GeneID (NCBI):

151987

UNIPROT ID:

Q9NY27

Full Name:

protein phosphatase 4, regulatory subunit 2

Calculated MW:

360aa, 40 kDa; 495aa, 55 kDa

Observed MW:

65 kDa

Purification Method:

Antigen affinity purification

Recommended Dilutions:

WB 1:500-1:2000

IP 0.5-4.0 µg for 1.0-3.0 mg of total protein lysate

IHC 1:20-1:200

IF/ICC 1:50-1:500

Applications

Tested Applications:

IF/ICC, IHC, IP, WB, ELISA

Cited Applications:

WB, CoIP

Species Specificity:

human

Cited Species:

human

Note-IHC: suggested antigen retrieval with TE buffer pH 9.0; (*) Alternatively, antigen retrieval may be performed with citrate buffer pH 6.0

Positive Controls:

WB: A549 cells, HepG2 cells

IP: HepG2 cells,

IHC: human liver cancer tissue, human pancreas tissue

IF/ICC: HepG2 cells,

Background Information

PPP4R2 is a regulatory subunit of protein phosphatase-4 (PPP4), a protein serine/threonine phosphatase implicated in microtubule organization at centrosomes and DNA double-strand break repair. The deduced 453-amino acid protein contains several potential phosphorylation sites and has a calculated molecular mass of 50.4 kD. Immunofluorescent analysis of HeLa and A431 cells revealed prominent localization of PPP4R2 at centrosomes, with weaker staining of cytoplasm and nucleus (PMID: 10769191).

Notable Publications

Author	Pubmed ID	Journal	Application
Zhengwei Liang	38513962	Exp Cell Res	WB, CoIP

Storage

Storage:

Store at -20°C. Stable for one year after shipment.

Storage Buffer:

PBS with 0.02% sodium azide and 50% glycerol pH 7.3.

Aliquoting is unnecessary for -20°C storage

For technical support and original validation data for this product please contact:

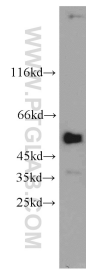
T: 4006900926

E: Proteintech-CN@ptglab.com

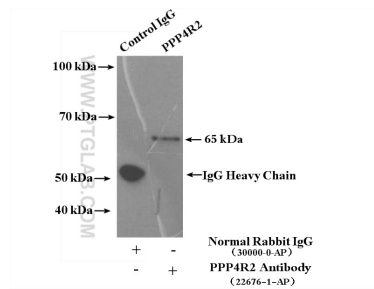
W: ptgcn.com

This product is exclusively available under Proteintech Group brand and is not available to purchase from any other manufacturer.

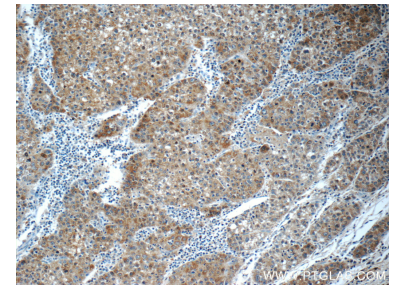
Selected Validation Data



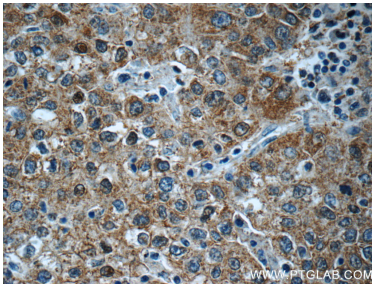
A549 cells were subjected to SDS PAGE followed by western blot with 22676-1-AP (PPP4R2 antibody) at dilution of 1:1000 incubated at room temperature for 1.5 hours.



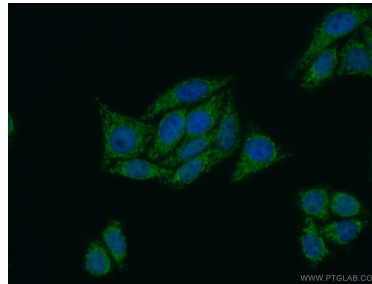
IP result of anti-PPP4R2 (IP:22676-1-AP, 4ug; Detection:22676-1-AP 1:1000) with HepG2 cells lysate 3600ug.



Immunohistochemical analysis of paraffin-embedded human liver cancer tissue slide using 22676-1-AP (PPP4R2 Antibody) at dilution of 1:50 (under 10x lens).



Immunohistochemical analysis of paraffin-embedded human liver cancer tissue slide using 22676-1-AP (PPP4R2 Antibody) at dilution of 1:50 (under 40x lens).



Immunofluorescent analysis of (10% Formaldehyde) fixed HepG2 cells using 22676-1-AP (PPP4R2 antibody) at dilution of 1:50 and Alexa Fluor 488-conjugated AffiniPure Goat Anti-Rabbit IgG(H+L).