

For Research Use Only

# SPRY4 Polyclonal antibody

Catalog Number: 22765-1-AP

Featured Product

6 Publications



## Basic Information

**Catalog Number:**

22765-1-AP

**Size:**

700 ug/ml

**Source:**

Rabbit

**Isotype:**

IgG

**Immunogen Catalog Number:**

AG18574

**GenBank Accession Number:**

BC125095

**GeneID (NCBI):**

81848

**UNIPROT ID:**

Q9C004

**Full Name:**

sprouty homolog 4 (Drosophila)

**Calculated MW:**

299 aa, 33 kDa

**Observed MW:**

35-38 kDa

**Purification Method:**

Antigen affinity purification

**Recommended Dilutions:**

WB 1:500-1:2000

IHC 1:50-1:500

## Applications

**Tested Applications:**

WB, IHC, ELISA

**Cited Applications:**

WB, IHC, IF

**Species Specificity:**

human

**Cited Species:**

human

**Note-IHC: suggested antigen retrieval with TE buffer pH 9.0; (\*) Alternatively, antigen retrieval may be performed with citrate buffer pH 6.0**

**Positive Controls:**

WB : A375 cells,

IHC : mouse liver tissue,

## Background Information

SPRY4, also named as Protein sprouty homolog 4, is a 299 amino acid protein, which contains one SPR (sprouty) domain and belongs to the sprouty family. SPRY4 suppresses the INS receptor and EGFR-transduced MAPK signaling pathway, but does not inhibit MAPK activation by a constitutively active mutant Ras. Probably impairs the formation of GTP-Ras. SPRY4 has a cellular function to regulate the actin cytoskeleton, independent of its inhibitory activity on the Ras/MAP kinase signalling. SPRY1, SPRY2, SPRY3, SPRY4, are central and complex regulators of the receptor tyrosine kinase (RTK) signalling pathway.

## Notable Publications

Author	Pubmed ID	Journal	Application
Na Li	36082406	Adipocyte	WB
Jing Li	31645544	Cell Death Dis	WB,IHC
Shini Liu	34464356	J Clin Invest	WB

## Storage

**Storage:**

Store at -20°C. Stable for one year after shipment.

**Storage Buffer:**

PBS with 0.02% sodium azide and 50% glycerol pH 7.3.

Aliquoting is unnecessary for -20°C storage

For technical support and original validation data for this product please contact:

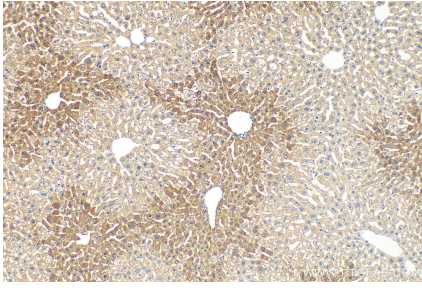
T: 4006900926

E: Proteintech-CN@ptglab.com

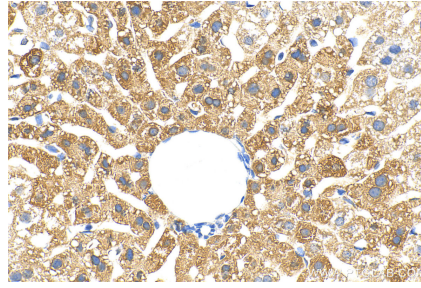
W: ptgcn.com

**This product is exclusively available under Proteintech Group brand and is not available to purchase from any other manufacturer.**

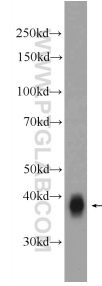
## Selected Validation Data



Immunohistochemical analysis of paraffin-embedded mouse liver tissue slide using 22765-1-AP (SPRY4 antibody) at dilution of 1:200 (under 10x lens). Heat mediated antigen retrieval with Tris-EDTA buffer (pH 9.0).



Immunohistochemical analysis of paraffin-embedded mouse liver tissue slide using 22765-1-AP (SPRY4 antibody) at dilution of 1:200 (under 40x lens). Heat mediated antigen retrieval with Tris-EDTA buffer (pH 9.0).



A375 cells were subjected to SDS PAGE followed by western blot with 22765-1-AP (SPRY4 Antibody) at dilution of 1:1000 incubated at room temperature for 1.5 hours.