

For Research Use Only

C7orf30 Polyclonal antibody

Catalog Number: 22838-1-AP **5 Publications**



Basic Information

Catalog Number: 22838-1-AP	GenBank Accession Number: BC012331	Purification Method: Antigen affinity purification
Size: 650 µg/ml	GeneID (NCBI): 115416	Recommended Dilutions: WB 1:1000-1:6000 IHC 1:20-1:200
Source: Rabbit	UNIPROT ID: Q96EH3	
Isotype: IgG	Full Name: chromosome 7 open reading frame 30	
Immunogen Catalog Number: AG18286	Calculated MW: 234 aa, 26 kDa	
	Observed MW: 26-28 kDa	

Applications

Tested Applications: IHC, WB, ELISA	Positive Controls: WB : HEK-293 cells, HeLa cells, HepG2 cells, K-562 cells, U-251 cells
Cited Applications: WB	IHC : human testis tissue, human liver tissue
Species Specificity: human	
Cited Species: human	

Note-IHC: suggested antigen retrieval with TE buffer pH 9.0; (*) Alternatively, antigen retrieval may be performed with citrate buffer pH 6.0

Background Information

C7orf30, also known as MALSU1, is a member of the iojap protein family. It was predicted to enable ribosomal large subunit binding activity. It was involved in negative regulation of mitochondrial translation and ribosomal large subunit biogenesis.

Notable Publications

Author	Pubmed ID	Journal	Application
Hauke S Hillen	34135319	Nat Commun	WB
Ya-Ting Tu	25683708	Cell Rep	WB
Elena Lavdovskaia	30085210	Nucleic Acids Res	WB

Storage

Storage:
Store at -20°C. Stable for one year after shipment.
Storage Buffer:
PBS with 0.02% sodium azide and 50% glycerol pH 7.3.
Aliquoting is unnecessary for -20°C storage

For technical support and original validation data for this product please contact:

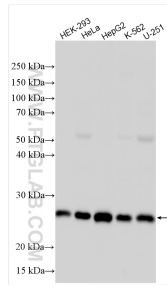
T: 4006900926

E: Proteintech-CN@ptglab.com

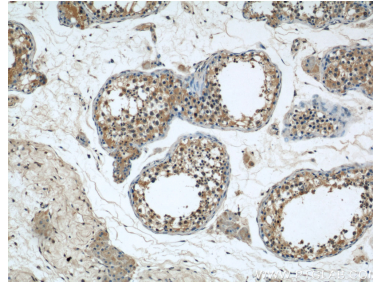
W: ptgcn.com

This product is exclusively available under Proteintech Group brand and is not available to purchase from any other manufacturer.

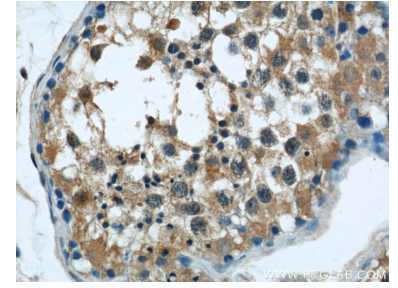
Selected Validation Data



Various lysates were subjected to SDS PAGE followed by western blot with 22838-1-AP (C7orf30 antibody) at dilution of 1:3000 incubated at room temperature for 1.5 hours.



Immunohistochemical analysis of paraffin-embedded human testis using 22838-1-AP (C7orf30 antibody) at dilution of 1:50 (under 10x lens).



Immunohistochemical analysis of paraffin-embedded human testis using 22838-1-AP (C7orf30 antibody) at dilution of 1:50 (under 40x lens).