

For Research Use Only

SHE Polyclonal antibody

Catalog Number: 22902-1-AP



Basic Information

Catalog Number: 22902-1-AP	GenBank Accession Number: NM_001010846	Purification Method: Antigen Affinity purified
Size: 400 µg/ml	GeneID (NCBI): 126669	Recommended Dilutions: WB 1:200-1:1000 IHC 1:50-1:500 IF/ICC 1:10-1:100
Source: Rabbit	UNIPROT ID: Q5VZ18	
Isotype: IgG	Full Name: Src homology 2 domain containing E	
	Calculated MW: 54 kDa	
	Observed MW: 55 kDa	

Applications

Tested Applications: IF/ICC, IHC, WB, ELISA	Positive Controls:
Species Specificity: human, mouse	WB : mouse testis tissue, IHC : human breast cancer tissue, IF/ICC : HepG2 cells,
Note-IHC: suggested antigen retrieval with TE buffer pH 9.0; (*) Alternatively, antigen retrieval may be performed with citrate buffer pH 6.0	

Background Information

SHE, also known as SH2 domain-containing adapter protein E, is a 495 amino acid protein whose molecular weight is 54 kDa. The function of SHE remains unknown. This antibody specifically recognises the 54 kDa protein.

Storage

Storage:
Store at -20°C. Stable for one year after shipment.
Storage Buffer:
PBS with 0.02% sodium azide and 50% glycerol pH 7.3.
Aliquoting is unnecessary for -20°C storage

For technical support and original validation data for this product please contact:

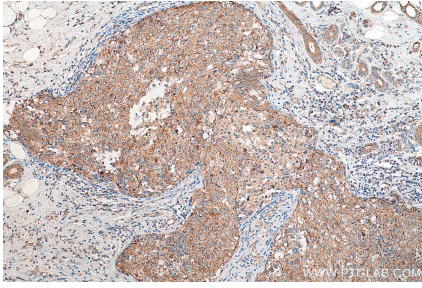
T: 4006900926

E: Proteintech-CN@ptglab.com

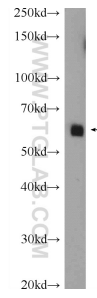
W: ptgcn.com

This product is exclusively available under Proteintech Group brand and is not available to purchase from any other manufacturer.

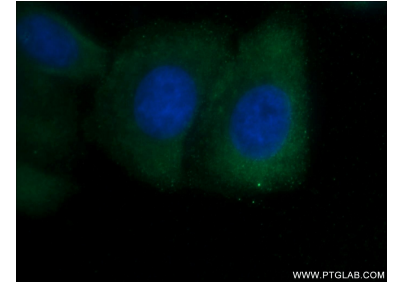
Selected Validation Data



Immunohistochemical analysis of paraffin-embedded human breast cancer tissue slide using 22902-1-AP (SHE antibody) at dilution of 1:200 (under 10x lens). Heat mediated antigen retrieval with Tris-EDTA buffer (pH 9.0).



mouse testis tissue were subjected to SDS PAGE followed by western blot with 22902-1-AP (SHE Antibody) at dilution of 1:300 incubated at room temperature for 1.5 hours.



Immunofluorescent analysis of HepG2 cells using 22902-1-AP (SHE antibody) at dilution of 1:25 and Alexa Fluor 488-conjugated AffiniPure Goat Anti-Rabbit IgG(H+L).