

For Research Use Only

SIX5 Polyclonal antibody

Catalog Number: 22938-1-AP

Featured Product

2 Publications



Basic Information

Catalog Number:

22938-1-AP

Size:

900 ug/ml

Source:

Rabbit

Isotype:

IgG

Immunogen Catalog Number:

AG18993

GenBank Accession Number:

BC156983

GeneID (NCBI):

147912

UNIPROT ID:

Q8N196

Full Name:

SIX homeobox 5

Calculated MW:

739 aa, 75 kDa

Observed MW:

100-105 kDa

Purification Method:

Antigen affinity purification

Recommended Dilutions:

WB 1:1000-1:4000

IP 0.5-4.0 ug for 1.0-3.0 mg of total protein lysate

IHC 1:20-1:200

Applications

Tested Applications:

WB, IHC, IP, ELISA

Cited Applications:

WB

Species Specificity:

human

Cited Species:

human, mouse

Note-IHC: suggested antigen retrieval with **TE buffer pH 9.0; (*) Alternatively, antigen retrieval may be performed with citrate buffer pH 6.0**

Positive Controls:

WB : A549 cells, HeLa cells, Y79 cells

IP : Y79 cells,

IHC : human kidney tissue,

Background Information

Notable Publications

Author	Pubmed ID	Journal	Application
Ramon Massoni-Badosa	38301653	Immunity	WB
Hannah J Wiedner	38026174	iScience	WB

Storage

Storage:

Store at -20°C. Stable for one year after shipment.

Storage Buffer:

PBS with 0.02% sodium azide and 50% glycerol pH 7.3.

Aliquoting is unnecessary for -20°C storage

For technical support and original validation data for this product please contact:

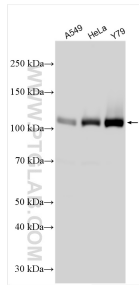
T: 4006900926

E: Proteintech-CN@ptglab.com

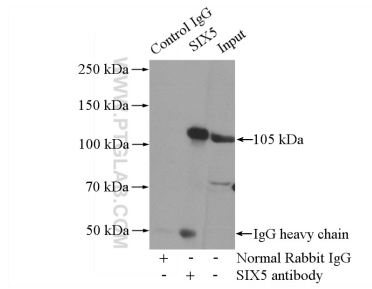
W: ptgcn.com

This product is exclusively available under Proteintech Group brand and is not available to purchase from any other manufacturer.

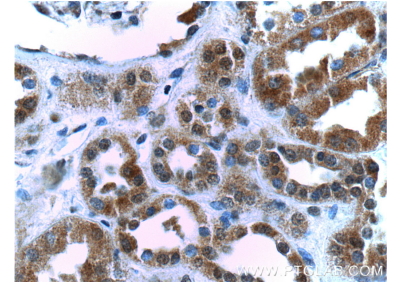
Selected Validation Data



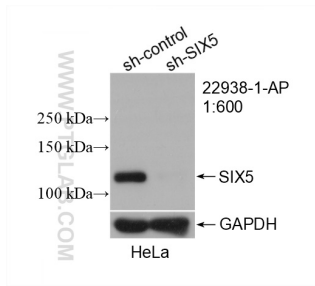
Various lysates were subjected to SDS PAGE followed by western blot with 22938-1-AP (SIX5 antibody) at dilution of 1:2000 incubated at room temperature for 1.5 hours.



IP result of anti-SIX5 (IP:22938-1-AP, 4ug; Detection:22938-1-AP 1:300) with Y79 cells lysate 2000ug.



Immunohistochemical analysis of paraffin-embedded human kidney tissue slide using 22938-1-AP (SIX5 Antibody) at dilution of 1:200 (under 40x lens).



WB result of SIX5 antibody (22938-1-AP; 1:600; incubated at room temperature for 1.5 hours) with sh-Control and sh-SIX5 transfected HeLa cells.