

For Research Use Only

SORCS1 Polyclonal antibody

Catalog Number: 23002-1-AP **1 Publications**



Basic Information

Catalog Number: 23002-1-AP	GenBank Accession Number: BC131597	Purification Method: Antigen Affinity purified
Size: 600 µg/ml	GeneID (NCBI): 114815	Recommended Dilutions: WB 1:1000-1:6000 IHC 1:20-1:200
Source: Rabbit	UNIPROT ID: Q8WY21	
Isotype: IgG	Full Name: sortilin-related VPS10 domain containing receptor 1	
Immunogen Catalog Number: AG19199	Calculated MW: 1168 aa, 130 kDa	
	Observed MW: 60-80 kDa	

Applications

Tested Applications: WB, IHC, ELISA	Positive Controls:
Cited Applications: WB	WB : HEK-293 cells, mouse kidney tissue, human brain tissue, Y79 cells
Species Specificity: human, mouse	IHC : human brain tissue,
Cited Species: human	
Note-IHC: suggested antigen retrieval with TE buffer pH 9.0; (*) Alternatively, antigen retrieval may be performed with citrate buffer pH 6.0	

Background Information

SORCS1, also named as SorCS, belongs to the family of VPS10 domain-containing receptors. SorCS1 immunoreactivity is widespread in a population of neurons throughout the brain. Two different types of cellular localization were observed. Most SorCS1 immunoreactive neurons exhibit a punctate cytoplasmic staining which extends into the dendrites, whilst occasionally SorCS1 neuronal immunoreactivity is associated with the plasma membrane.

Notable Publications

Author	Pubmed ID	Journal	Application
Junfen Xu	34326275	Aging (Albany NY)	WB

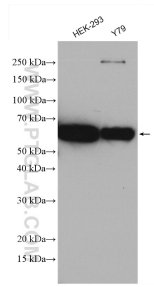
Storage

Storage:
Store at -20°C. Stable for one year after shipment.
Storage Buffer:
PBS with 0.02% sodium azide and 50% glycerol pH 7.3.
Aliquoting is unnecessary for -20°C storage

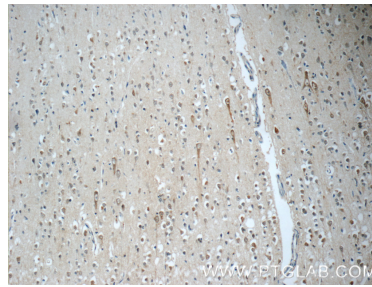
For technical support and original validation data for this product please contact:
T: 4006900926 E: Proteintech-CN@ptglab.com W: ptgcn.com

This product is exclusively available under Proteintech Group brand and is not available to purchase from any other manufacturer.

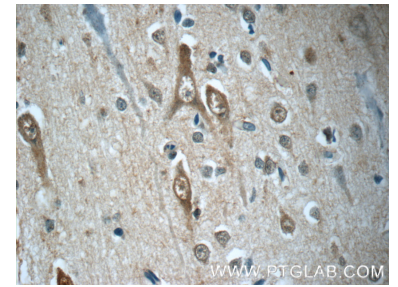
Selected Validation Data



Various lysates were subjected to SDS PAGE followed by western blot with 23002-1-AP (SORCS1 antibody) at dilution of 1:3000 incubated at room temperature for 1.5 hours.



Immunohistochemical analysis of paraffin-embedded human brain tissue slide using 23002-1-AP (SORCS1 Antibody) at dilution of 1:50 (under 10x lens).



Immunohistochemical analysis of paraffin-embedded human brain tissue slide using 23002-1-AP (SORCS1 Antibody) at dilution of 1:50 (under 40x lens).