

For Research Use Only

WDR36 Polyclonal antibody

Catalog Number: 23126-1-AP



Basic Information

Catalog Number:

23126-1-AP

Size:

400 µg/ml

Source:

Rabbit

Isotype:

IgG

Immunogen Catalog Number:

AG19425

GenBank Accession Number:

BC136517

GeneID (NCBI):

134430

UNIPROT ID:

Q8NI36

Full Name:

WD repeat domain 36

Calculated MW:

951 aa, 105 kDa

Observed MW:

99-105 kDa

Purification Method:

Antigen Affinity purified

Recommended Dilutions:

WB 1:5000-1:50000

IP 0.5-4.0 µg for 1.0-3.0 mg of total protein lysate

Applications

Tested Applications:

IP, WB, ELISA

Species Specificity:

human, mouse

Positive Controls:

WB : HEK-293 cells, L02 cells

IP : mouse liver tissue,

Background Information

Storage

Storage:

Store at -20°C. Stable for one year after shipment.

Storage Buffer:

PBS with 0.02% sodium azide and 50% glycerol pH 7.3.

Aliquoting is unnecessary for -20°C storage

For technical support and original validation data for this product please contact:

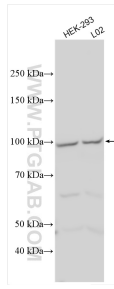
T: 4006900926

E: Proteintech-CN@ptglab.com

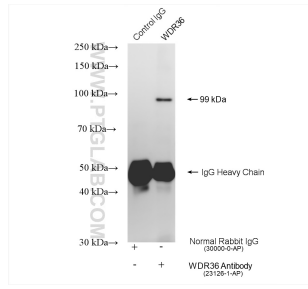
W: ptgcn.com

This product is exclusively available under Proteintech Group brand and is not available to purchase from any other manufacturer.

Selected Validation Data



Various lysates were subjected to SDS PAGE followed by western blot with 23126-1-AP (WDR36 antibody) at dilution of 1:10000 incubated at room temperature for 1.5 hours.



IP result of anti-WDR36 (IP:23126-1-AP, 4ug; Detection:23126-1-AP 1:500) with mouse liver tissue lysate 1840 ug.