

For Research Use Only

TMEM127 Polyclonal antibody

Catalog Number: 23142-1-AP **2 Publications**



Basic Information

Catalog Number: 23142-1-AP	GenBank Accession Number: BC039892	Purification Method: Antigen Affinity purified
Size: 850 ug/ml	GeneID (NCBI): 55654	Recommended Dilutions: IP 0.5-4.0 ug for 1.0-3.0 mg of total protein lysate
Source: Rabbit	UNIPROT ID: O75204	IHC 1:250-1:1000
Isotype: IgG	Full Name: transmembrane protein 127	IF/ICC 1:200-1:800
Immunogen Catalog Number: AG19472	Calculated MW: 238 aa, 26 kDa	
	Observed MW: 26 kDa	

Applications

Tested Applications: IHC, IF/ICC, IP, ELISA	Positive Controls:
Cited Applications: WB	IP: HeLa cells,
Species Specificity: human, mouse	IHC: human stomach cancer tissue, human heart tissue, human liver cancer tissue
Cited Species: human, mouse	IF/ICC: NIH/3T3 cells,

Note-IHC: suggested antigen retrieval with TE buffer pH 9.0; (*) Alternatively, antigen retrieval may be performed with citrate buffer pH 6.0

Background Information

Notable Publications

Author	Pubmed ID	Journal	Application
Xiaoyan Hao	39388928	Tissue Cell	WB
Chaojun Yan	37589705	Elife	WB

Storage

Storage:
Store at -20°C. Stable for one year after shipment.
Storage Buffer:
PBS with 0.02% sodium azide and 50% glycerol pH 7.3.
Aliquoting is unnecessary for -20°C storage

For technical support and original validation data for this product please contact:

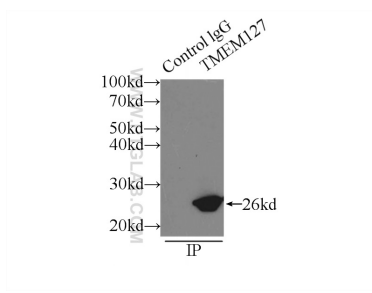
T: 4006900926

E: Proteintech-CN@ptglab.com

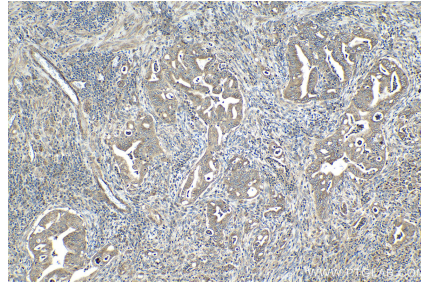
W: ptgcn.com

This product is exclusively available under Proteintech Group brand and is not available to purchase from any other manufacturer.

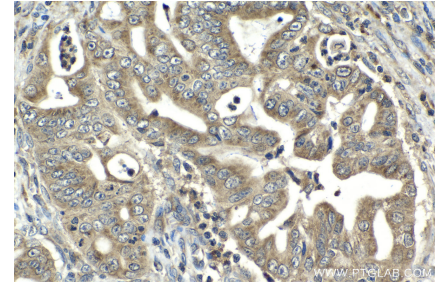
Selected Validation Data



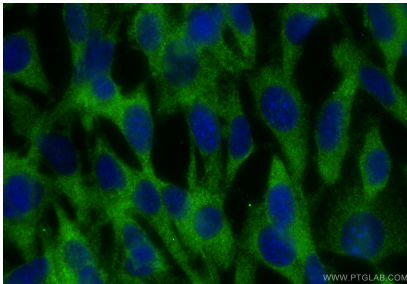
IP result of anti-TMEM127 (IP:23142-1-AP, 3ug; Detection:23142-1-AP 1:500) with HeLa cells lysate 3000ug.



Immunohistochemical analysis of paraffin-embedded human stomach cancer tissue slide using 23142-1-AP (TMEM127 antibody) at dilution of 1:500 (under 10x lens). Heat mediated antigen retrieval with Tris-EDTA buffer (pH 9.0).



Immunohistochemical analysis of paraffin-embedded human stomach cancer tissue slide using 23142-1-AP (TMEM127 antibody) at dilution of 1:500 (under 40x lens). Heat mediated antigen retrieval with Tris-EDTA buffer (pH 9.0).



Immunofluorescent analysis of (-20°C Ethanol) fixed NIH/3T3 cells using TMEM127 antibody (23142-1-AP) at dilution of 1:400 and CoraLite®488-Conjugated Goat Anti-Rabbit IgG(H+L) (SA00013-2).