

For Research Use Only

Connexin-50 Polyclonal antibody

Catalog Number: 23161-1-AP

1 Publications



Basic Information

Catalog Number:

23161-1-AP

Size:

450 µg/ml

Source:

Rabbit

Isotype:

IgG

Immunogen Catalog Number:

AG19572

GenBank Accession Number:

BC146507

GeneID (NCBI):

2703

UNIPROT ID:

P48165

Full Name:

gap junction protein, alpha 8, 50kDa

Calculated MW:

433 aa, 48 kDa

Observed MW:

60-65 kDa

Purification Method:

Antigen Affinity purified

Recommended Dilutions:

WB 1:1000-1:6000

Applications

Tested Applications:

WB, ELISA

Cited Applications:

IF

Species Specificity:

human, mouse, rat

Cited Species:

human

Positive Controls:

WB : mouse eye tissue, rat eye tissue

Background Information

Connexin-50 (Cx50), also known as Gap junction alpha 8 protein (GJA8), belongs to the connexin family. Connexins are membrane-spanning proteins that assemble to form gap junction channels that facilitate the transfer of ions and small molecules between cells. Connexin-50 is expressed in lens fiber cells and is essential for the normal physiological function of the lens (PMID: 11916859). Together with Connexin-46, Connexin-50 forms functional half-gap junction channels in non-junctional membranes. The expected molecular weight of Connexin-50 is 50 kDa, and in some literature, Connexin-50 was detected in lens samples at ~65 kDa (PMID: 31195409; PMID: 29196765).

Notable Publications

Author	Pubmed ID	Journal	Application
Shuqian Dong	38052906	Eur J Hum Genet	IF

Storage

Storage:

Store at -20°C. Stable for one year after shipment.

Storage Buffer:

PBS with 0.02% sodium azide and 50% glycerol pH 7.3.

Aliquoting is unnecessary for -20°C storage

For technical support and original validation data for this product please contact:

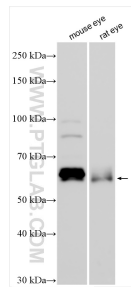
T: 4006900926

E: Proteintech-CN@ptglab.com

W: ptgcn.com

This product is exclusively available under Proteintech Group brand and is not available to purchase from any other manufacturer.

Selected Validation Data



Various lysates were subjected to SDS PAGE followed by western blot with 23161-1-AP (Connexin-50 antibody) at dilution of 1:3000 incubated at room temperature for 1.5 hours.