

For Research Use Only

ERVWE1 Polyclonal antibody

Catalog Number: 23172-1-AP



Basic Information

Catalog Number:

23172-1-AP

Size:

220 µg/ml

Source:

Rabbit

Isotype:

IgG

Immunogen Catalog Number:

AG19227

GenBank Accession Number:

BC137381

GeneID (NCBI):

30816

UNIPROT ID:

Q9UQF0

Full Name:

endogenous retroviral family W,
env(C7), member 1

Calculated MW:

538 aa, 60 kDa

Observed MW:

70-73 kDa

Purification Method:

Antigen affinity purification

Recommended Dilutions:

WB 1:500-1:1000

Applications

Tested Applications:

WB, ELISA

Species Specificity:

human, mouse, rat

Positive Controls:

WB : mouse testis tissue, rat testis tissue

Background Information

ERVWE1 encodes a 538 amino-acid, 73-kDa glycosylated (60 kDa unglycosylated) envelope protein, Syncytin-1. It is expressed in the placental syncytiotrophoblast and participates in syncytium formation during placenta morphogenesis. Mounting evidence suggests that aberrant expression of ERVWE1 involves the etiology of schizophrenia.

Storage

Storage:

Store at -20°C. Stable for one year after shipment.

Storage Buffer:

PBS with 0.02% sodium azide and 50% glycerol pH 7.3.

Aliquoting is unnecessary for -20°C storage

For technical support and original validation data for this product please contact:

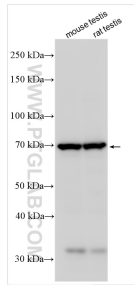
T: 4006900926

E: Proteintech-CN@ptglab.com

W: ptgcn.com

This product is exclusively available under Proteintech Group brand and is not available to purchase from any other manufacturer.

Selected Validation Data



Various lysates were subjected to SDS PAGE followed by western blot with 23172-1-AP (ERVWE1 antibody) at dilution of 1:600 incubated at room temperature for 1.5 hours.