

For Research Use Only

# MEPE Polyclonal antibody

Catalog Number: 23256-1-AP



## Basic Information

<b>Catalog Number:</b> 23256-1-AP	<b>GenBank Accession Number:</b> BC128158	<b>Purification Method:</b> Antigen affinity purification
<b>Size:</b> 1000 µg/ml	<b>GeneID (NCBI):</b> 56955	<b>Recommended Dilutions:</b> WB 1:500-1:2000
<b>Source:</b> Rabbit	<b>UNIPROT ID:</b> Q9NQ76	IP 0.5-4.0 µg for 1.0-3.0 mg of total protein lysate
<b>Isotype:</b> IgG	<b>Full Name:</b> matrix extracellular phosphoglycoprotein	IHC 1:20-1:200
<b>Immunogen Catalog Number:</b> AG19758	<b>Calculated MW:</b> 525 aa, 58 kDa	IF/ICC 1:20-1:200
	<b>Observed MW:</b> 98 kDa	

## Applications

<b>Tested Applications:</b> IF/ICC, IHC, IP, WB, ELISA	<b>Positive Controls:</b>
<b>Species Specificity:</b> human	<b>WB:</b> HeLa cells, MCF-7 cells
<b>Note-IHC: suggested antigen retrieval with TE buffer pH 9.0; (*) Alternatively, antigen retrieval may be performed with citrate buffer pH 6.0</b>	<b>IP:</b> HeLa cells,
	<b>IHC:</b> human lung tissue,
	<b>IF/ICC:</b> HepG2 cells,

## Background Information

Matrix extracellular phosphoglycoprotein (MEPE), also known as osteoblast/osteocyte factor 45 (OF45), is a member of the small integrin-binding ligand N-linked glycoprotein (SIBLING) family (PMID: 12952171). MEPE promotes renal phosphate excretion and modulates mineralization (PMID: 22582013). It can be phosphorylated by secreted protein kinases. (PMID: 14962809). MEPE is expressed in osteoblasts, osteocytes and odontoblasts, and the expression has also been reported in numerous human tumor cell lines (PMID: 14962809; 20145617). It is a 525-amino acid protein with a calculated molecular weight of 58 kDa. This antibody raised against a full-length human MEPE protein detects a major band of 98 kDa.

## Storage

**Storage:**  
Store at -20°C. Stable for one year after shipment.

**Storage Buffer:**  
PBS with 0.02% sodium azide and 50% glycerol pH 7.3.

Aliquoting is unnecessary for -20°C storage

For technical support and original validation data for this product please contact:

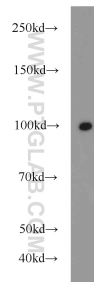
T: 4006900926

E: [Proteintech-CN@ptglab.com](mailto:Proteintech-CN@ptglab.com)

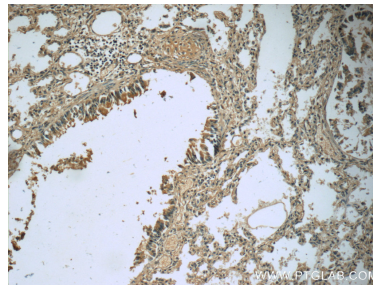
W: [ptgcn.com](http://ptgcn.com)

This product is exclusively available under Proteintech Group brand and is not available to purchase from any other manufacturer.

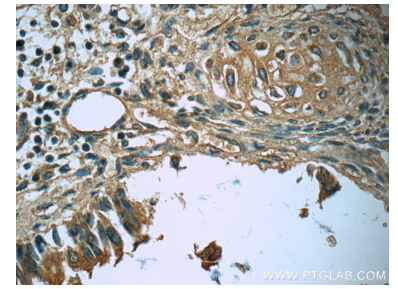
## Selected Validation Data



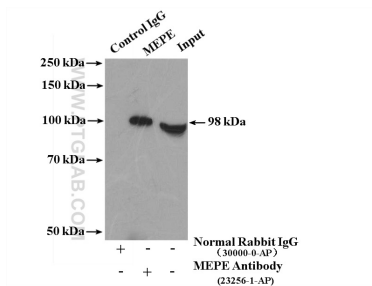
HeLa cells were subjected to SDS PAGE followed by western blot with 23256-1-AP (MEPE antibody) at dilution of 1:1500 incubated at room temperature for 1.5 hours.



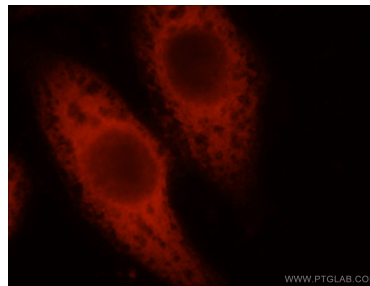
Immunohistochemical analysis of paraffin-embedded human lung slide using 23256-1-AP (MEPE Antibody) at dilution of 1:50 (under 10x lens).



Immunohistochemical analysis of paraffin-embedded human lung slide using 23256-1-AP (MEPE Antibody) at dilution of 1:50 (under 40x lens).



IP result of anti-MEPE (IP:23256-1-AP, 4ug; Detection:23256-1-AP 1:1000) with HeLa cells lysate 4000ug.



Immunofluorescent analysis of HepG2 cells, using MEPE antibody 23256-1-AP at 1:50 dilution and Rhodamine-labeled goat anti-rabbit IgG (red).