

For Research Use Only

MAML3 Polyclonal antibody

Catalog Number: 23263-1-AP



Basic Information

| | | |
|---|---|---|
| Catalog Number: 23263-1-AP | GenBank Accession Number: BC137131 | Purification Method: Antigen affinity purification |
| Size: 400 µg/ml | GeneID (NCBI): 55534 | Recommended Dilutions: WB 1:500-1:2000 IF/ICC 1:20-1:200 |
| Source: Rabbit | UNIPROT ID: Q96JK9 | |
| Isotype: IgG | Full Name: mastermind-like 3 (Drosophila) | |
| Immunogen Catalog Number: AG19788 | Calculated MW: 1133 aa, 122 kDa | |
| | Observed MW: 122 kDa | |

Applications

| | |
|--|---|
| Tested Applications: IF/ICC, WB, ELISA | Positive Controls: WB : HEK-293 cells, IF/ICC : HEK-293 cells, |
| Species Specificity: human | |

Background Information

The three MAML genes are widely expressed in adult tissues but exhibit distinct expression patterns in mouse early spinal cord development. All MAML proteins localize to nuclear bodies, share a conserved basic domain in their N termini that binds to the ankyrin repeat domain of Notch, and contain a transcriptional activation domain in their C termini. MAML3 acts as a transcriptional coactivator for NOTCH proteins and has been shown to amplify NOTCH-induced transcription of HES1.

Storage

Storage:
Store at -20°C. Stable for one year after shipment.
Storage Buffer:
PBS with 0.02% sodium azide and 50% glycerol pH 7.3.
Aliquoting is unnecessary for -20°C storage

For technical support and original validation data for this product please contact:

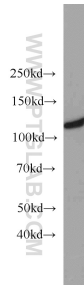
T: 4006900926

E: Proteintech-CN@ptglab.com

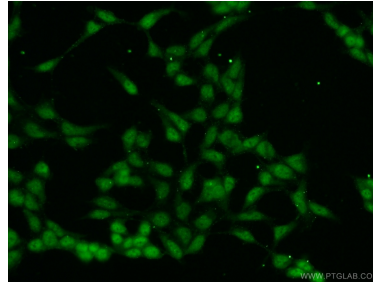
W: ptgcn.com

This product is exclusively available under Proteintech Group brand and is not available to purchase from any other manufacturer.

Selected Validation Data



HEK-293 cells were subjected to SDS PAGE followed by western blot with 23263-1-AP (MAML3 antibody) at dilution of 1:2000 incubated at room temperature for 1.5 hours.



Immunofluorescent analysis of HEK-293 cells using 23263-1-AP (MAML3 antibody) at dilution of 1:50 and Alexa Fluor 488-conjugated AffiniPure Goat Anti-Rabbit IgG(H+L).