

For Research Use Only

GPR39 Polyclonal antibody

Catalog Number: 23326-1-AP

1 Publications



Basic Information

Catalog Number: 23326-1-AP	GenBank Accession Number: BC125046	Purification Method: Antigen affinity purification
Concentration: 600 ug/ml	GeneID (NCBI): 2863	Recommended Dilutions: IHC 1:50-1:500
Source: Rabbit	UNIPROT ID: O43194	
Isotype: IgG	Full Name: G protein-coupled receptor 39	
Immunogen Catalog Number: AG19913	Calculated MW: 453 aa, 51 kDa	

Applications

Tested Applications: IHC, ELISA	Positive Controls: IHC : human small intestine tissue,
Cited Applications: WB	
Species Specificity: human	
Cited Species: mouse	
Note-IHC: suggested antigen retrieval with TE buffer pH 9.0; (*) Alternatively, antigen retrieval may be performed with citrate buffer pH 6.0	

Background Information

GPR39 (G protein-coupled receptor 39), a member of the ghrelin family of G protein-coupled receptors, is zinc-responsive and contributes to the regulation of diverse neurovascular and neurologic functions (PMID: 34360964). GPR39 has relatively high ligand-independent constitutive activity, based on an aromatic cluster on the inner face of the extracellular ends of TM domains VI and VII, similar to other members of the ghrelin receptor family (PMID: 33918078).

Notable Publications

Author	Pubmed ID	Journal	Application
Panpan Yang	35953014	Int J Biochem Cell Biol	WB

Storage

Storage:
Store at -20°C. Stable for one year after shipment.
Storage Buffer:
PBS with 0.02% sodium azide and 50% glycerol pH 7.3.
Aliquoting is unnecessary for -20°C storage

For technical support and original validation data for this product please contact:

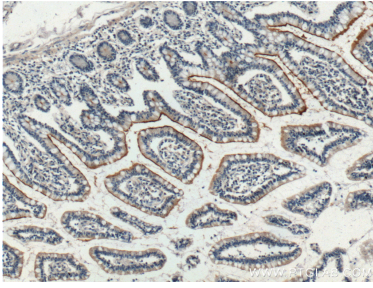
T: 4006900926

E: Proteintech-CN@ptglab.com

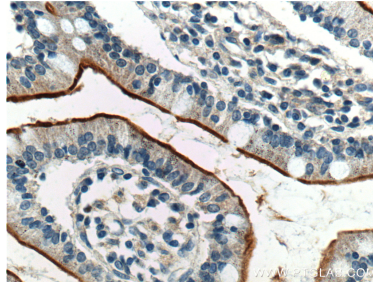
W: ptgcn.com

This product is exclusively available under Proteintech Group brand and is not available to purchase from any other manufacturer.

Selected Validation Data



Immunohistochemical analysis of paraffin-embedded human small intestine tissue slide using 23326-1-AP (GPR39 Antibody) at dilution of 1:200 (under 10x lens).



Immunohistochemical analysis of paraffin-embedded human small intestine tissue slide using 23326-1-AP (GPR39 Antibody) at dilution of 1:200 (under 40x lens).