

For Research Use Only

DOCK180 Polyclonal antibody

Catalog Number: 23421-1-AP **5 Publications**



Basic Information

Catalog Number:

23421-1-AP

Size:

1000 µg/ml

Source:

Rabbit

Isotype:

IgG

Immunogen Catalog Number:

AG18069

GenBank Accession Number:

BC146857

GeneID (NCBI):

1793

UNIPROT ID:

Q14185

Full Name:

dedicator of cytokinesis 1

Calculated MW:

1865 aa, 215 kDa

Observed MW:

215 kDa

Purification Method:

Antigen affinity purification

Recommended Dilutions:

WB 1:500-1:2000

IP 0.5-4.0 µg for 1.0-3.0 mg of total protein lysate

IHC 1:20-1:200

IF/ICC 1:10-1:100

Applications

Tested Applications:

IF/ICC, IHC, IP, WB, ELISA

Cited Applications:

WB

Species Specificity:

human

Cited Species:

human, mouse, zebrafish

Note-IHC: suggested antigen retrieval with TE buffer pH 9.0; (*) Alternatively, antigen retrieval may be performed with citrate buffer pH 6.0

Positive Controls:

WB : HEK-293 cells, LNCaP cells, MCF-7 cells, A431 cells, HeLa cells

IP : HeLa cells,

IHC : human colon tissue,

IF/ICC : HeLa cells,

Background Information

Notable Publications

Author	Pubmed ID	Journal	Application
Xujuan Sun	29802377	Cell Death Dis	WB
Hua Qu	33627322	Diabetes	WB
Chuangkun Li	38750717	Exp Cell Res	WB

Storage

Storage:

Store at -20°C. Stable for one year after shipment.

Storage Buffer:

PBS with 0.02% sodium azide and 50% glycerol pH 7.3.

Aliquoting is unnecessary for -20°C storage

For technical support and original validation data for this product please contact:

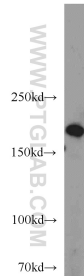
T: 4006900926

E: Proteintech-CN@ptglab.com

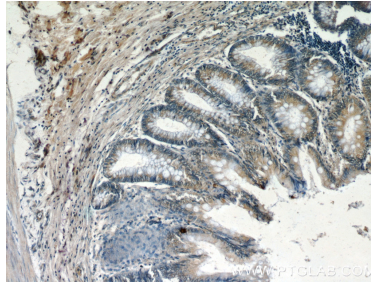
W: ptgcn.com

This product is exclusively available under Proteintech Group brand and is not available to purchase from any other manufacturer.

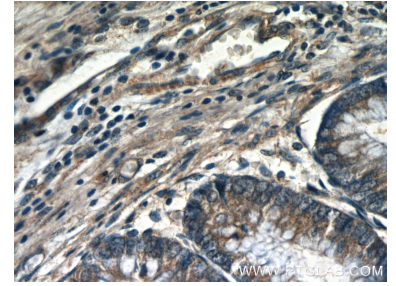
Selected Validation Data



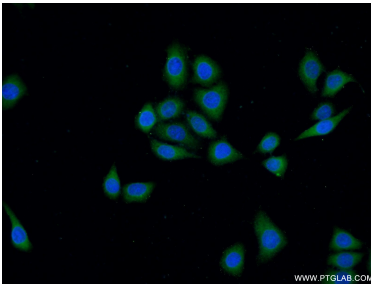
HEK-293 cells were subjected to SDS PAGE followed by western blot with 23421-1-AP (DOCK180 antibody) at dilution of 1:1000 incubated at room temperature for 1.5 hours.



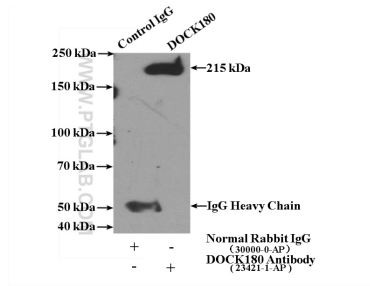
Immunohistochemical analysis of paraffin-embedded human colon slide using 23421-1-AP (DOCK180 antibody at dilution of 1:50.



Immunohistochemical analysis of paraffin-embedded human colon slide using 23421-1-AP (DOCK180 antibody at dilution of 1:50.



Immunofluorescent analysis of (-20°C Ethanol) fixed HeLa cells using 23421-1-AP (DOCK180 antibody) at dilution of 1:25 and Alexa Fluor 488-conjugated AffiniPure Goat Anti-Rabbit IgG(H+L).



IP result of anti-DOCK180 (IP:23421-1-AP, 4ug; Detection:23421-1-AP 1:1000) with HeLa cells lysate 3200ug.