

For Research Use Only

KHDC1 Polyclonal antibody

Catalog Number: 23443-1-AP



Basic Information

Catalog Number: 23443-1-AP	GenBank Accession Number: BC022080	Purification Method: Antigen Affinity purified
Size: 500 ug/ml	GeneID (NCBI): 80759	Recommended Dilutions: WB 1:500-1:1000 IHC 1:50-1:500 IF/ICC 1:20-1:200
Source: Rabbit	UNIPROT ID: Q4VXA5	
Isotype: IgG	Full Name: KH homology domain containing 1	
Immunogen Catalog Number: AG20115	Calculated MW: 237 aa, 27 kDa	
	Observed MW: 35-40 kDa	

Applications

Tested Applications:
WB, IHC, IF/ICC, ELISA

Species Specificity:
human

Note-IHC: suggested antigen retrieval with TE buffer pH 9.0; (*) Alternatively, antigen retrieval may be performed with citrate buffer pH 6.0

Positive Controls:

WB : L02 cells,

IHC : human stomach cancer tissue, human liver tissue, human stomach tissue

IF/ICC : L02 cells,

Background Information

KHDC1, also named as C6orf148, belongs to the KHDC1 family. KHDC1 has two isoforms with calculated MW 27 kDa and 18 kDa. It's a membrane protein. We got 35-40 kDa in our WB detection.

Storage

Storage:

Store at -20°C. Stable for one year after shipment.

Storage Buffer:

PBS with 0.02% sodium azide and 50% glycerol pH 7.3.

Aliquoting is unnecessary for -20°C storage

For technical support and original validation data for this product please contact:

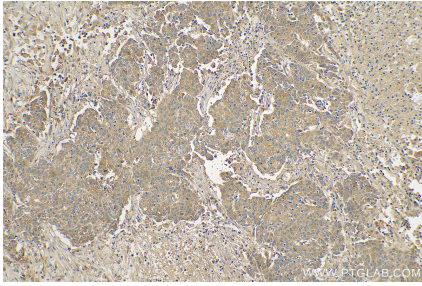
T: 4006900926

E: Proteintech-CN@ptglab.com

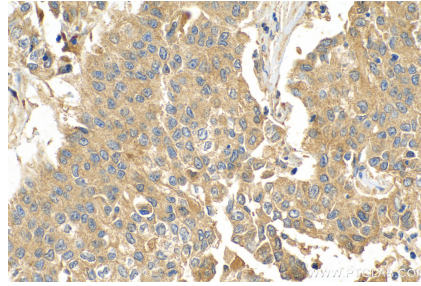
W: ptgcn.com

This product is exclusively available under Proteintech Group brand and is not available to purchase from any other manufacturer.

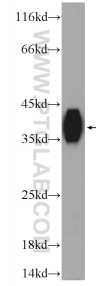
Selected Validation Data



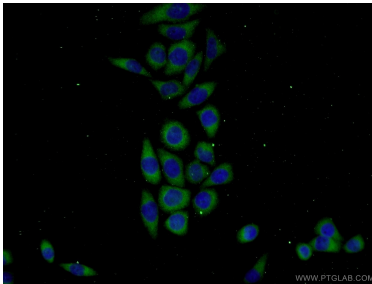
Immunohistochemical analysis of paraffin-embedded human stomach cancer tissue slide using 23443-1-AP (KHDC1 antibody) at dilution of 1:100 (under 10x lens). Heat mediated antigen retrieval with Tris-EDTA buffer (pH 9.0).



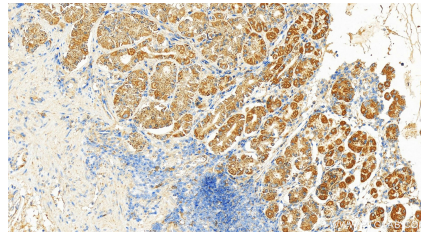
Immunohistochemical analysis of paraffin-embedded human stomach cancer tissue slide using 23443-1-AP (KHDC1 antibody) at dilution of 1:100 (under 40x lens). Heat mediated antigen retrieval with Tris-EDTA buffer (pH 9.0).



L02 cells were subjected to SDS PAGE followed by western blot with 23443-1-AP (KHDC1 Antibody) at dilution of 1:600 incubated at room temperature for 1.5 hours.



Immunofluorescent analysis of L02 cells using 23443-1-AP (KHDC1 antibody) at dilution of 1:50 and Alexa Fluor 488-conjugated AffiniPure Goat Anti-Rabbit IgG(H+L).



Immunohistochemical analysis of paraffin-embedded human normal stomach slide using 23443-1-AP (KHDC1 antibody) at dilution of 1:200 (under 20x lens). Heat mediated antigen retrieval with Tris-EDTA buffer (pH 9.0).