

For Research Use Only

# TPC1 Polyclonal antibody, PBS Only

Catalog Number: 23758-1-PBS

Featured Product



## Basic Information

Catalog Number:

23758-1-PBS

Size:

1 mg/ml

Source:

Rabbit

Isotype:

IgG

Immunogen Catalog Number:

AG20607

GenBank Accession Number:

BC136795

GeneID (NCBI):

53373

UNIPROT ID:

Q9ULQ1

Full Name:

two pore segment channel 1

Calculated MW:

816 aa, 94 kDa

Observed MW:

94 kDa

Purification Method:

Antigen Affinity purified

## Applications

Tested Applications:

WB, IHC, IF/ICC, Indirect ELISA

Species Specificity:

human, mouse, rat

## Background Information

Two-pore channels (TPCs) are ancient members of the voltage-gated ion channel superfamily, are thought to be non-selective cation channels permeable to  $Ca^{2+}$ . They mediate their physiological effects through releasing  $Ca^{2+}$  from acidic organelles in response to cues such as the second messenger, NAADP (nicotinic acid adenine dinucleotide phosphate). Genetic knockout and pharmacological inhibition experiments demonstrate that the two-pore channels, TPC1 and TPC2, are required for infection by Filoviruses Ebola and Marburg in mice. (PMID: 29746898; PMID 25722412) Two pore segment channel 1 (TPC1) is a human protein encoded by the TPCN1 gene.

## Storage

Storage:

Store at  $-80^{\circ}C$ .

The product is shipped with ice packs. Upon receipt, store it immediately at  $-80^{\circ}C$

Storage Buffer:

PBS Only

For technical support and original validation data for this product please contact:

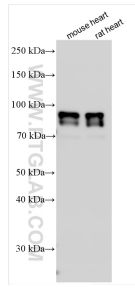
T: 4006900926

E: [Proteintech-CN@ptglab.com](mailto:Proteintech-CN@ptglab.com)

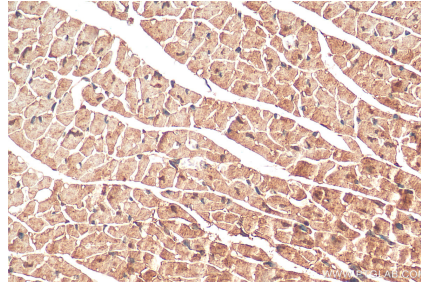
W: [ptgcn.com](http://ptgcn.com)

This product is exclusively available under Proteintech Group brand and is not available to purchase from any other manufacturer.

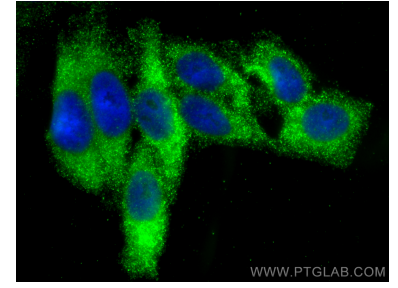
## Selected Validation Data



Various lysates were subjected to SDS PAGE followed by western blot with 23758-1-AP (TPC1 antibody) at dilution of 1:3000 incubated at room temperature for 1.5 hours. This data was developed using the same antibody clone with 23758-1-PBS in a different storage buffer formulation.



Immunohistochemical analysis of paraffin-embedded mouse heart tissue slide using 23758-1-AP (TPCN1 antibody) at dilution of 1:200 (under 40x lens). Heat mediated antigen retrieval with Tris-EDTA buffer (pH 9.0). This data was developed using the same antibody clone with 23758-1-PBS in a different storage buffer formulation.



Immunofluorescent analysis of (-20°C Ethanol) fixed HepG2 cells using TPC1 antibody (23758-1-AP) at dilution of 1:200 and Multi-rAb CoraLite® Plus 488-Goat Anti-Rabbit Recombinant Secondary Antibody (H+L) (RGAR002). This data was developed using the same antibody clone with 23758-1-PBS in a different storage buffer formulation.