

For Research Use Only

KLK7 Polyclonal antibody

Catalog Number:23810-1-AP



Basic Information

Catalog Number: 23810-1-AP	GenBank Accession Number: BC032005	Purification Method: Antigen Affinity purified
Size: 400 ug/ml	GeneID (NCBI): 5650	Recommended Dilutions: WB 1:500-1:1000 IF/ICC 1:50-1:500
Source: Rabbit	UNIPROT ID: P49862	
Isotype: IgG	Full Name: kallikrein-related peptidase 7	
Immunogen Catalog Number: AG20760	Calculated MW: 28 kDa	
	Observed MW: 27-30 kDa	

Applications

Tested Applications: WB, IF/ICC, ELISA	Positive Controls: WB : mouse skin tissue, rat skin tissue IF/ICC : A431 cells,
Species Specificity: human, mouse, rat	

Background Information

Kallikrein-7(KLK7), also known as SCCE, PRSS6, is a member of the kallikrein subfamily of serine proteases involved in various enzymatic processes. KLK7 is abundantly expressed in the skin and is expressed by keratinocytes in the epidermis(PMID: 10974542).

Storage

Storage:
Store at -20°C. Stable for one year after shipment.
Storage Buffer:
PBS with 0.02% sodium azide and 50% glycerol pH 7.3.
Aliquoting is unnecessary for -20°C storage

For technical support and original validation data for this product please contact:

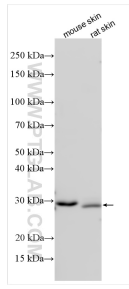
T: 4006900926

E: Proteintech-CN@ptglab.com

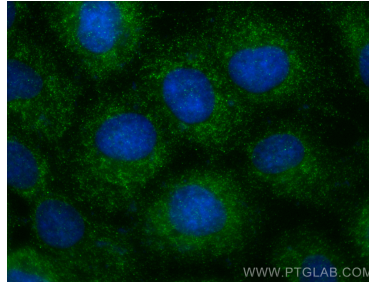
W: ptgcn.com

This product is exclusively available under Proteintech Group brand and is not available to purchase from any other manufacturer.

Selected Validation Data



Various lysates were subjected to SDS PAGE followed by western blot with 23810-1-AP (KLK7 antibody) at dilution of 1:800 incubated at room temperature for 1.5 hours.



Immunofluorescent analysis of (-20°C Methanol) fixed A431 cells using KLK7 antibody (23810-1-AP) at dilution of 1:200 and CoraLite® 488-Conjugated Goat Anti-Rabbit IgG(H+L) (SA00013-2).