

For Research Use Only

# NAT8L Polyclonal antibody

Catalog Number: 23841-1-AP

1 Publications



## Basic Information

**Catalog Number:**

23841-1-AP

**Size:**

600 ug/ml

**Source:**

Rabbit

**Isotype:**

IgG

**Immunogen Catalog Number:**

AG20832

**GenBank Accession Number:**

BC103748

**GeneID (NCBI):**

339983

**UNIPROT ID:**

Q8N9F0

**Full Name:**

N-acetyltransferase 8-like (GCN5-related, putative)

**Calculated MW:**

134 aa, 15 kDa

**Observed MW:**

48 kDa

**Purification Method:**

Antigen Affinity purified

**Recommended Dilutions:**

WB 1:500-1:2000

IF/ICC 1:200-1:800

## Applications

**Tested Applications:**

WB, IF/ICC, ELISA

**Cited Applications:**

WB

**Species Specificity:**

human, mouse, rat

**Cited Species:**

rat

**Positive Controls:**

WB : HUVEC cells, mouse brain tissue, rat brain tissue

IF/ICC : HEK-293 cells,

## Background Information

NAT8L (N-acetyltransferase 8-like) catalyzes the formation of N-acetyl aspartate (NAA) from acetyl-CoA and aspartate. In the brain, NAA delivers the acetate moiety to synthesize acetyl-CoA, which is further used for fatty acid generation (PMID: 24155240). NAT8L modulation may impinge on the metabolic reprogramming of cancer cells (PMID: 36580805). The calculated MW of NAT8L is around 33 kDa, and the observed MW is around 45 kDa.

## Notable Publications

Author	Pubmed ID	Journal	Application
Junyi Zhang	39052058	Naunyn Schmiedebergs Arch Pharmacol	WB

## Storage

**Storage:**

Store at -20°C. Stable for one year after shipment.

**Storage Buffer:**

PBS with 0.02% sodium azide and 50% glycerol pH 7.3.

Aliquoting is unnecessary for -20°C storage

For technical support and original validation data for this product please contact:

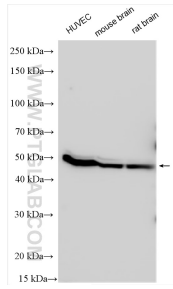
T: 4006900926

E: Proteintech-CN@ptglab.com

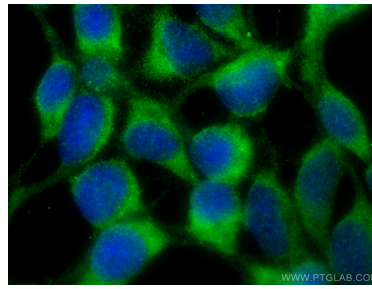
W: ptgcn.com

This product is exclusively available under Proteintech Group brand and is not available to purchase from any other manufacturer.

## Selected Validation Data



Various lysates were subjected to SDS PAGE followed by western blot with 23841-1-AP (NAT8L antibody) at dilution of 1:1000 incubated at room temperature for 1.5 hours.



Immunofluorescent analysis of (-20°C Ethanol) fixed HEK-293 cells using NAT8L antibody (23841-1-AP) at dilution of 1:400 and CoraLite® 488-Conjugated AffiniPure Goat Anti-Rabbit IgG(H+L) (SA00013-2).